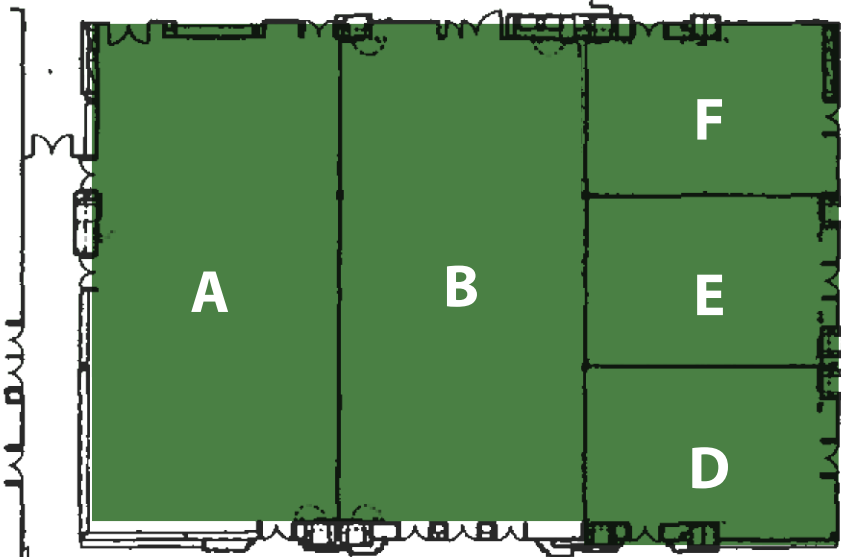
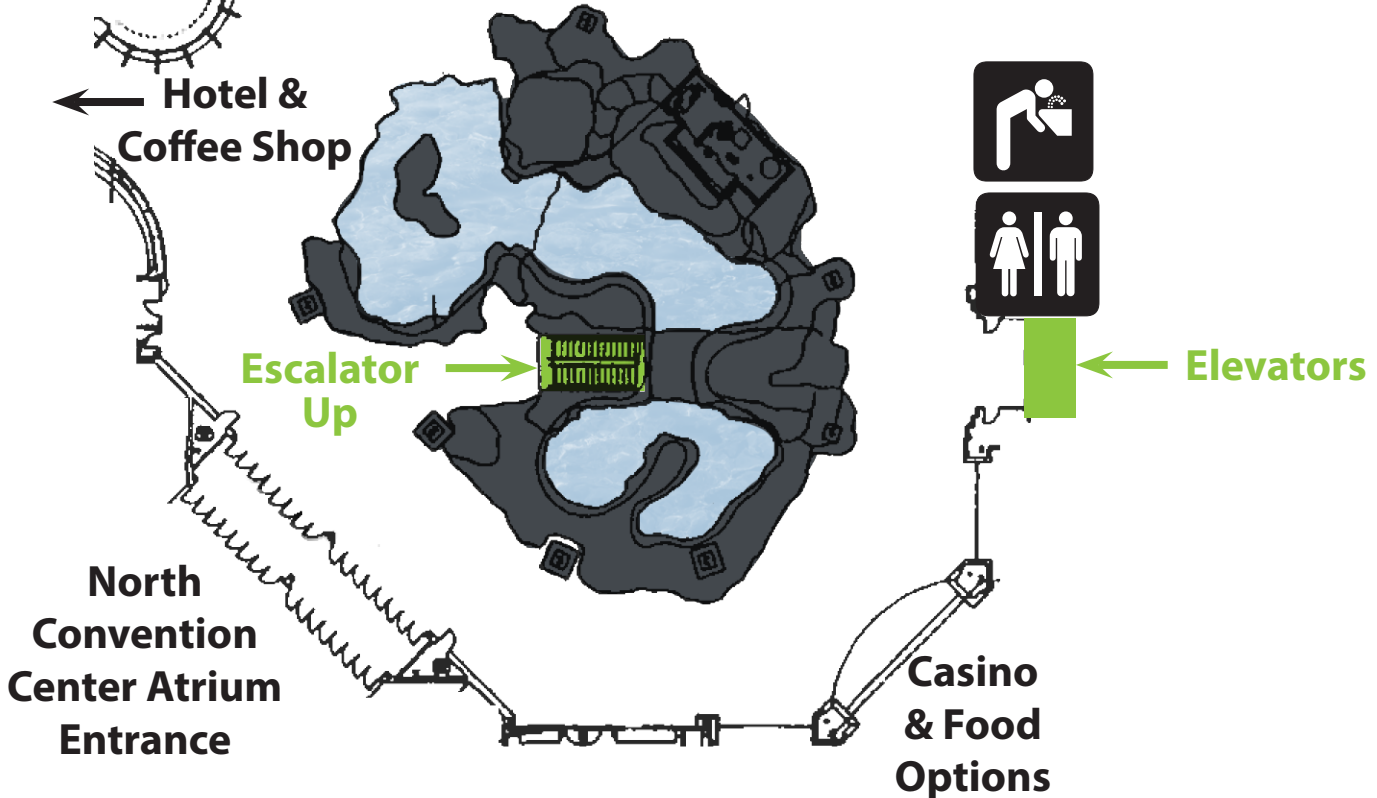
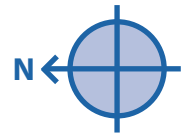


First Floor

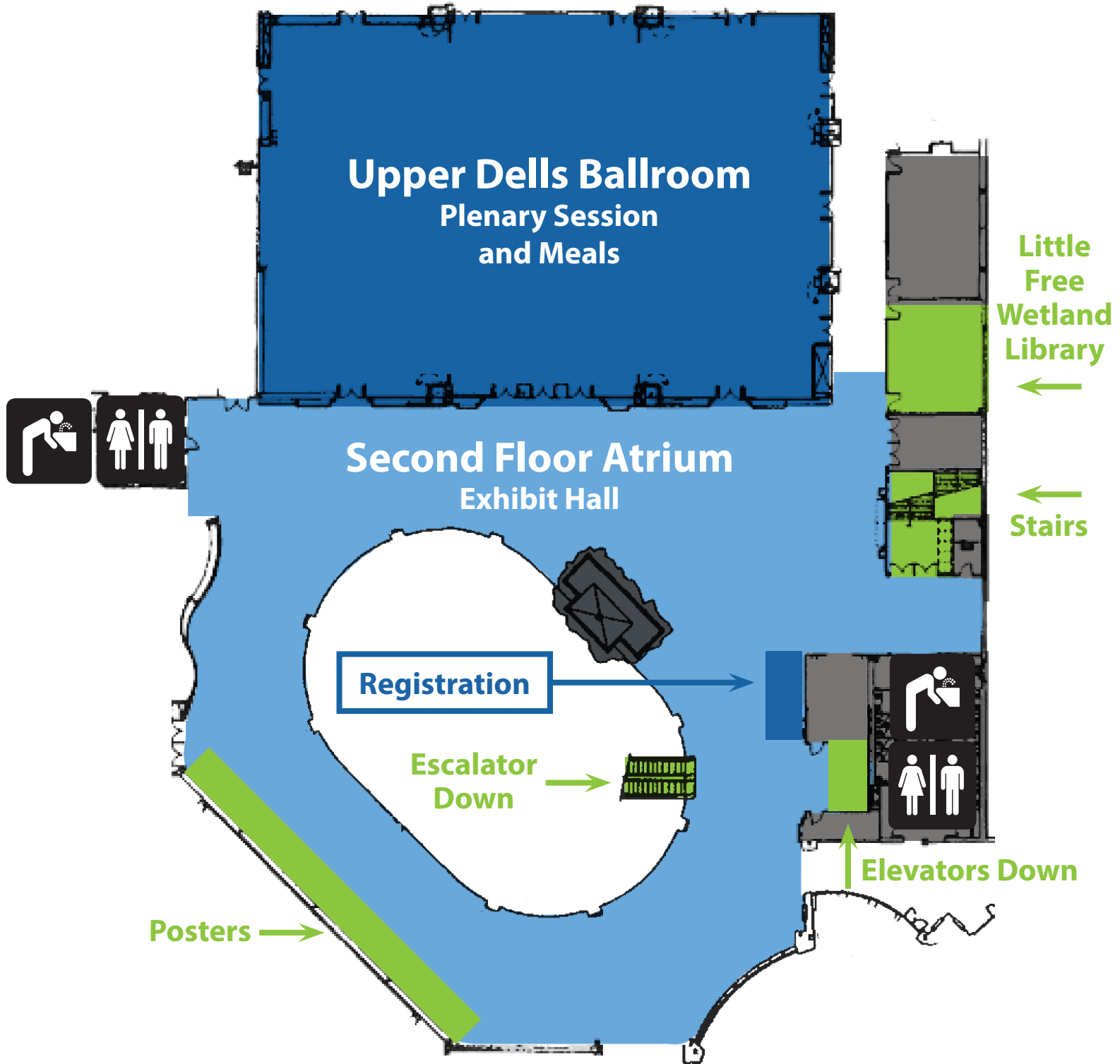


← Lower Dells
Ballroom
Concurrent
Sessions, Symposia,
Workshops,
Roundtables, and
Working Groups





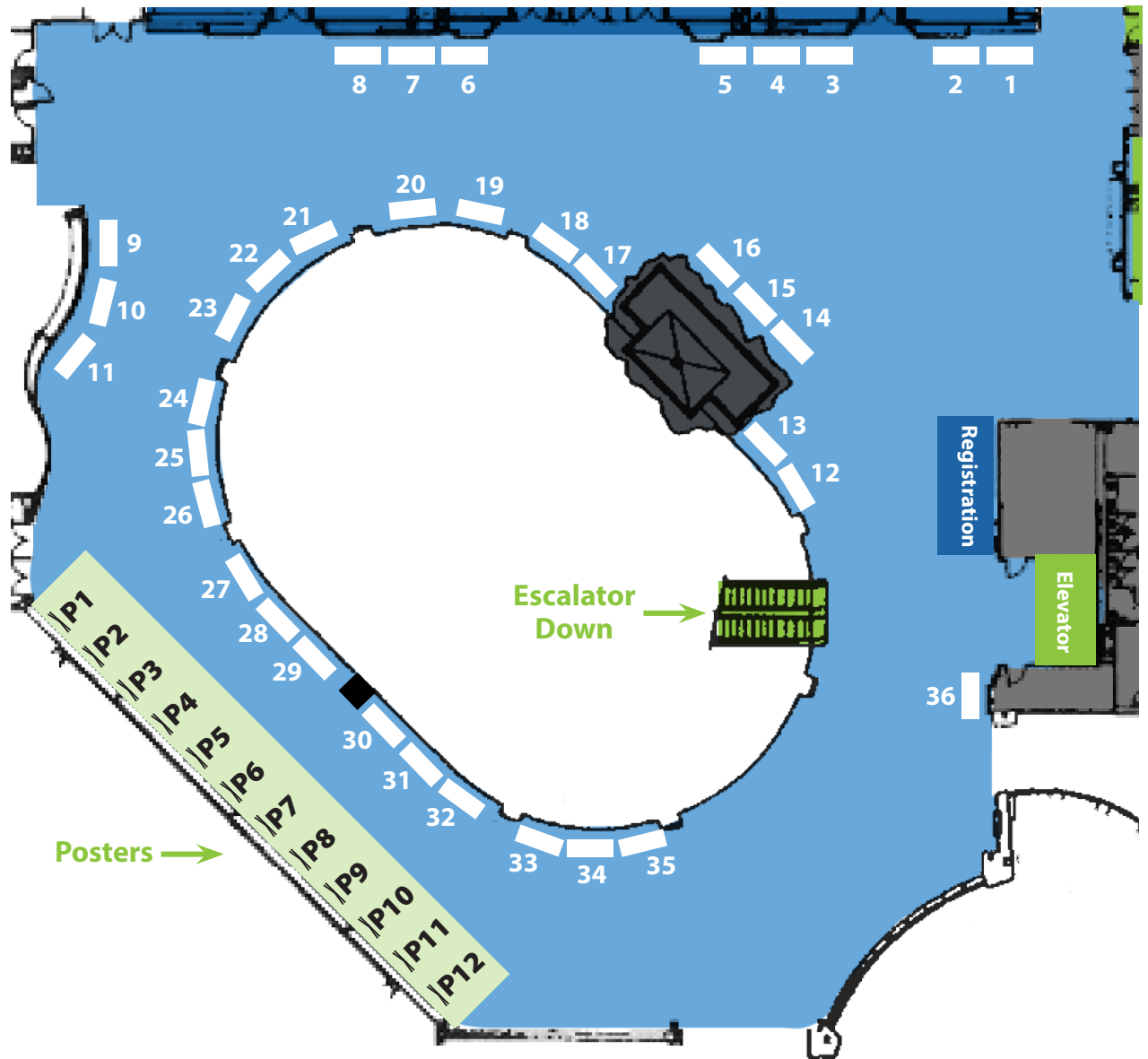
Second Floor



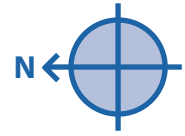
Exhibitors

- Aldo Leopold Foundation **30**
- Baxter & Woodman, Inc. **4**
- BCE Signage **32**
- BioApp **12**
- Cedar Corporation **34**
- Civil & Environmental Consultants, Inc. **31**
- Custom Bridges & Boardwalks **28**
- Davey Resource Group, Inc. **21**
- Emmons & Olivier Resources **1**
- GAI Consultants, Inc. **18**
- GEI Consultants, Inc. **14**
- Heartland Ecological Group **2**
- Helena Agri-Enterprises **8**
- HOBO Data Logger **19**
- International Crane Foundation **16**
- ISG **20**
- Johnson's Nursery **29**
- Merjent **5**
- Midwest Partners in Amphibian & Reptile Conservation **10**

- MNL **11**
- Natural Garden Natives **6**
- Natural Resources Foundation of Wisconsin **15**
- NES Ecological Services **13**
- Nutrien Solutions **25**
- Resource Environmental Solutions **23**
- Scalgo **33**
- Southern Wisconsin Bird Alliance **9**
- Stantec **3**
- Sterling Site Access Solutions **35**
- Terracon **26**
- UW Biodiversity Conservation & Management Program **22**
- UW-La Crosse Graduate & Extended Learning **7**
- UW-Madison Extension Natural Resources Institute **17**
- Wisconsin Flowgate & Drainage **24**
- Wisconsin Wetlands Association **36**
- Wisconsin's Green Fire, Inc. **27**



Wednesday Night Activities!



Second Floor

