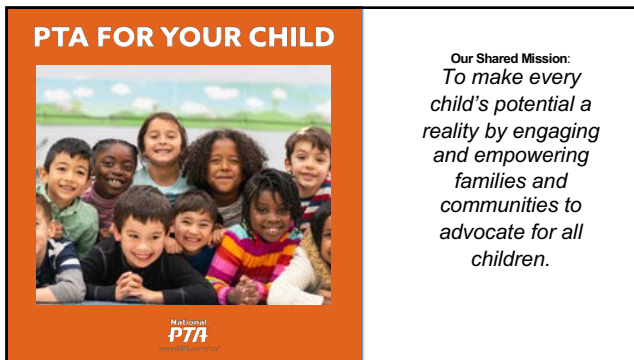
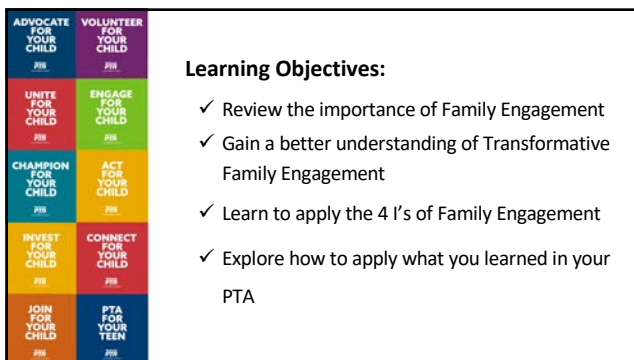




1




2



3

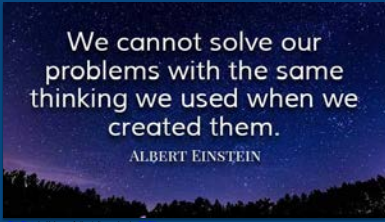
THERE IS NO WRONG WAY TO PTA



National PTA

- **Family or Parent** refers to any caring adult in a child's life – grandparents, siblings, foster parents, mentors, etc.
- **Family engagement** refers to how PTAs strengthen family connections to their school and child's education.

4




Why be Transformative?

National PTA

5

Cross your Arms




National PTA

6

P-T-A
VERB /PEE-TEE-AY/
TO SUPPORT YOUR CHILD'S POTENTIAL IN ONE OR MULTIPLE WAYS:

- 1) To invest in your child's potential.
- 2) To volunteer for your child's potential.
- 3) To advocate for your child's potential.




How has your school or PTA changed the way you approached family engagement?

- What did you do differently?
- Where you able to meet the needs of your current families?
- Where you able to serve new families?
- What worked well?
- What would you have done differently?

7

How to Make PTA's Mission a Reality




PTA National Standards for Family-School Partnerships

+



Transformative Family Engagement

=



8

THERE IS NO WRONG WAY TO PTA

Transformative Family Engagement

A shared effort of families, schools, and community leaders to advance programs, practices, and policies that *empower every parent to make their child's potential a reality.*

9

Guiding Principles: The 4 I's

INCLUSIVE

Embracing and valuing diverse perspectives.

INDIVIDUALIZED

Meeting the unique needs of every family and child.

INTEGRATED

Connecting and aligning with the educational system.

IMPACTFUL

Empowering families to support their child's success.

10

Inclusive

Inclusive

Embracing and valuing diverse perspectives.

11

Individualized

Individualized

Meeting the unique needs of every family and child.

12

Integrated

National PTA
everychild.onevoice.®

Integrated
Connecting and aligning with the educational system.

13

Impactful

National PTA
everychild.onevoice.®

Impactful
Empowering families to support their child's success.

14

Apply What You Learned

National PTA
everychild.onevoice.®

Reflect

Discuss

Share

15

ADVOCATE FOR YOUR CHILD <small>PTA</small>	VOLUNTEER FOR YOUR CHILD <small>PTA</small>	<p>Additional Resources</p> <ul style="list-style-type: none">➤ Learn more about how transformative family engagement shows up in PTAs Leading the Way in Transformative Family Engagement➤ For busy parents looking for a new podcast, check out http://notesfromthebackpack.com
UNITE FOR YOUR CHILD <small>PTA</small>	ENGAGE FOR YOUR CHILD <small>PTA</small>	
CHAMPION FOR YOUR CHILD <small>PTA</small>	ACT FOR YOUR CHILD <small>PTA</small>	
INVEST FOR YOUR CHILD <small>PTA</small>	CONNECT FOR YOUR CHILD <small>PTA</small>	
JOIN FOR YOUR CHILD <small>PTA</small>	PTA FOR YOUR TEEN <small>PTA</small>	

16



"...No matter how skilled professionals are, nor how loving families are, each cannot achieve alone, what the parties, working hand-in-hand, can accomplish together." (Adapted from Peterson and Cooper as cited in 2007)

National
PTA
POWER. POSITIVE. PROGRESS.

17
