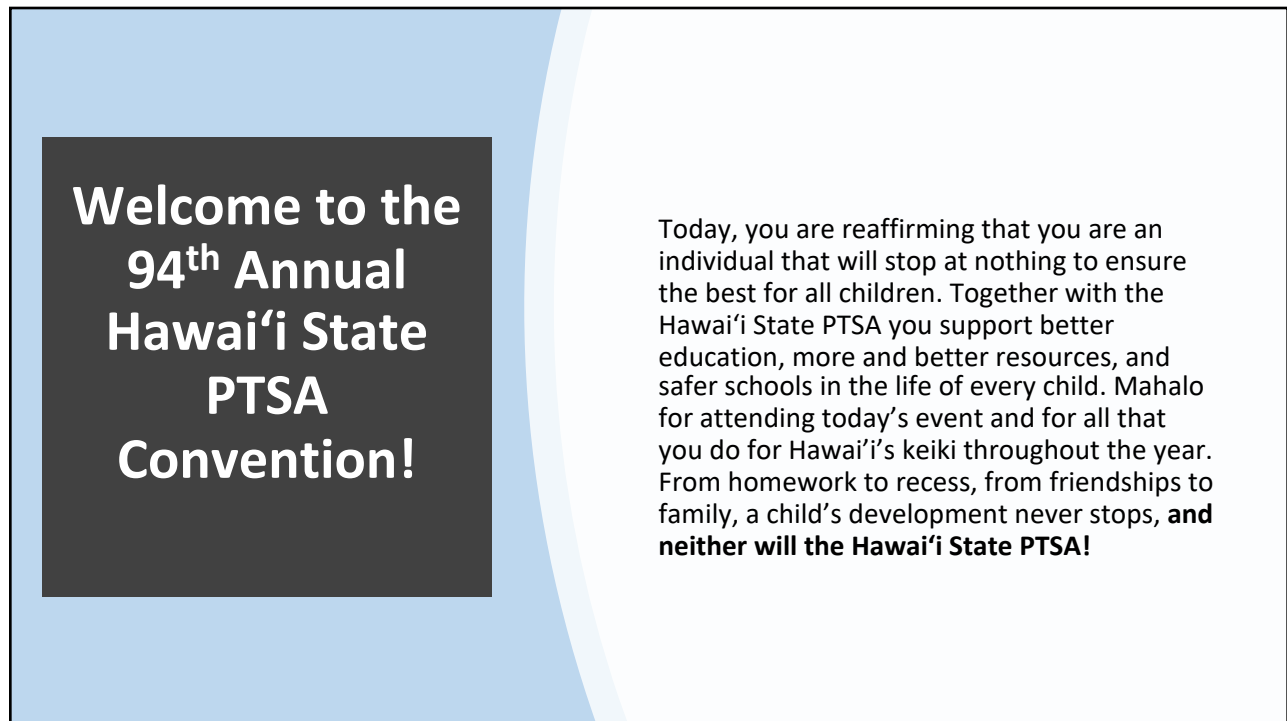


1



2

# Table of Contents

Convention Welcome	02
Table of Contents	03
Credentials Report	04
Greetings from Patti Rabacal, Hawai'i State PTSA President	05
Greetings from Anna King, National PTA President	05
Greetings from David Ige, Governor of the State of Hawai'i	06
Greetings from Keith Hayashi, Hawai'i Interim Superintendent of Schools	06
2022 - 2022 Hawai'i PTSA Board of Directors	07
94 <sup>th</sup> Annual Convention Schedule	09
Keynote Speakers	10
94 <sup>th</sup> Annual Convention Workshop Schedule	12
Convention Standing Rules	15
94 <sup>th</sup> Annual Convention Membership Awards	16
2021- 2022 State Reflections Winners	17
Hawai'i State PTSA 94 <sup>th</sup> Annual Convention Financial Report	21
Election Slate of Nominees	23
Exhibitor/Sponsors	24

3

## Credentials Report

Participants	General Session I	General Session II
Local Unit Delegates		
HSPTSA Board of Directors		
Total Delegates		
Exhibitors		
Guests		
Total Attendees		
Local Units Represented		
Regions Represented		

4



Aloha mai to the 94<sup>th</sup> annual Hawaii State PTSA Convention!

These past two years has proven humanity can persevere. The Hawaii State PTSA Board of Directors and I would like to express our appreciation and mahalo you for being a part to *'E Kūkulu No Ka Wā Ma Hope, Building for the Future'* and volunteering your time to fulfill the PTA's mission to *make every child's potential a reality by engaging and empowering families and communities to advocate for all children.*

Globally, we have experienced the uncertainty of educating the children and just 'living' in the new normalcy. As we focus towards educating the keiki in an in-person safe and healthy environment, PTAs have continued to represent the teacher, parent and student voice on Capitol Hill, as well as in our local government. Membership plays an important role in expressing this voice. We appreciate the local units who have been creative to promote membership within their schools. Although, you may not tangibly see the membership outcomes like computers, textbooks, etc., we will see the membership outcomes in appropriation of monies, voice on various National and State committees, etc. to fund the Hawaii State education system.

This year's convention theme is *'E Kūkulu No Ka Wā Ma Hope, Building for the Future.* As we venture towards the future, we wish to focus on pilina, building relationships beginning this year. Relationships begin in the home, then through schools and communities. Without relationships, the human race will disconnect themselves and serious unhealthy outcomes occur. We will need to prevent this from occurring within our homes. This year's convention will offer courses on Mental Health and Building Foundations of Aloha, as well as building a financial foundation for keiki and the PTSA local units.

Mahalo for spending your precious 'ohana time with this year's virtual convention and for continuously sharing your passion on building for the future for Hawai'i keiki and 'ohana.

E malama pono,  
Patti Rabacal  
Hawaii State PTSA President  
2021-2023



# GREETINGS



**125** YEARS of ADVOCATING for CHILDREN

Greetings PTA Members:

Welcome to your state convention! I hope that you are staying safe and well. Thank you for taking this time to learn and grow as a leader. Your attendance is a testament to your commitment to our PTA mission: *To make every child's potential a reality.*



I am honored to serve as the 57th national president of this incredible association that we love so much. PTA reached our momentous 125th Anniversary on Feb. 17, 2022, and it fills me with pride to say that our mission work is alive and thriving in communities across the nation.

We help every child reach for the stars, we empower our families to fully engage in their child's development, we support our teachers and staff, and most importantly, we raise our One PTA voice to advocate for all of our children's needs to all decision makers.

As Mother Teresa said, "The miracle is not that we do this work, but that we are happy to do it." The coming months will provide new challenges and new opportunities, but I know I can count on all of you to meet them with PTA passion, persistence and servant leadership.

My wish for you at your state convention is to leave this experience with a renewed mindset. Use this moment to recommit yourself to this work. Be open to possibilities. Today is a chance for all of us to rededicate ourselves to the mission and work even harder to make sure that our children are successful in their schools, and that families are engaged like never before.

Please know that National PTA is here to support you every step of the way. I encourage you to explore the available resources, especially the PTA for Your Child membership campaign, at [PTA.org/MembershipCampaign](https://PTA.org/MembershipCampaign). Remember, we want every family in our schools to join PTA, because we can do more together than apart.


We can succeed in ensuring our children become all that they can be. Are you ready to start the work with me? I can't do it alone—so I can't wait to see what we can accomplish together, as **ONE PTA!**

Thank you for all that you do. Have a great convention!


Sincerely,  
  
Anna King  
President, National PTA

1250 North Pitt Street Alexandria, VA 22314 | Phone: (800) 307-4762 or (703) 518-1200 | Fax: (703) 836-0842  
Email: [info@PTA.org](mailto:info@PTA.org) | Website: [PTA.org](https://PTA.org)

5



*Special Message from  
Governor David Y. Ige*  
In Recognition of  
**94<sup>th</sup> Hawai'i State Parent Teacher  
Student Association Convention**  
April 30, 2022




On behalf of the people of Hawai'i, I extend a warm aloha to everyone gathered virtually today for the 94<sup>th</sup> Hawai'i State Parent Teacher Student Association (PTSA) Convention. Education is fundamentally important as it opens doors to a variety of opportunities and is critical in helping to shape a better society. Education helps develop human personality, thoughts, and character and is a driving force behind the success of our state, our nation and the world.


Comprised of thousands of parents and individuals dedicated to working continuously to help improve the lives of children in Hawai'i, the Hawai'i State PTSA serves as a powerful voice for children, a relevant resource for parents and a strong advocate for public education.

The pandemic presented many challenges for our community, and I commend all of you for rising above the challenges, for your resilience and continued dedication and hard work to improve the lives of children in Hawai'i.


Mahalo to the organizers of this virtual convention. Best wishes to all participants as you share knowledge, celebrate achievements, and continue to inspire each other.

With warmest regards,  
  
DAVID Y. IGE  
Governor, State of Hawai'i

# GREETINGS



**MESSAGE FROM THE INTERIM SUPERINTENDENT**




Aloha, Hawai'i PTSA members! On behalf of the Hawai'i State Department of Education, welcome to the 94<sup>th</sup> Annual Hawai'i State Parent Teacher Student Association Convention.

I want to begin by acknowledging that the ongoing pandemic coupled with the recent surge in cases due to the omicron variant has resulted in an especially challenging school year for our communities and families. There are not enough words to express the gratitude I have for your commitment to being a voice for children, a relevant resource for parents, and a strong advocate for public education despite these difficult times.

This school year we have prioritized keeping our campuses open for in-person learning while ensuring schools maintain important health and safety protocols. These efforts have been credited by health officials for helping to mitigate the spread of COVID on our campuses. So far this school year, we've been able to provide opportunities for vaccination at 535 school-based clinics through state and federal partnerships. Additionally, the Department offers on-campus COVID testing to students and staff at more than 135 campuses, to date. Furthermore, the Department continues to supply offices and schools with essential PPE and industrial hygiene supplies. I am proud to continue these efforts as we move forward, navigating this pandemic as we learn more everyday.

One of the Department's major goals moving forward is to further prioritize workforce readiness – which is applicable across our schools as we work to strengthen students' journeys throughout the K-12 system. With the support and encouragement from public school advocates like you, I am confident that we can develop and sustain a strong system that provides quality educational and workforce opportunities for students to learn and grow from.

Thank you for your dedicated partnership in supporting the scholarship and well-being of Hawai'i's public school students. Together, we can equip them with the skills they need to reach their full potential as we continue to build for the future.

  
Interim Superintendent Keith Hayashi  
Hawaii State Department of Education

6

## 2021-2022 Hawai'i State PTSA Executive Board Officers

President: Patti Rabacal

VP of Leadership: Marissa Baptista

VP of Legislation: Jessica Wong-Sumida

VP of Membership: Missy Hoesel

VP of Programs: Ann Olson

Treasurer: Sheri Fukushima

Secretary: Kellee Hearther

7

## 2021-2022 Hawai'i State PTSA Region Directors

East Hawai'i:  
Cheryl Kiefer

West Hawai'i:  
Open

Maui:  
Liz Sager

Windward Oahu:  
Michelle  
Letchford

Honolulu:  
Kathy Driver

Central Oahu:  
Jodi Fujimoto

Leeward Oahu:  
Calvin Endo

Kauai:  
Malie Smith

8

## Convention Schedule

<b>8:00AM - 9:30AM</b>	<b>General Session I</b>
<b>9:40AM – 10:30AM</b>	<b>Workshop Sessions 1</b>
<b>10:40AM – 11:30AM</b>	<b>Workshop Sessions 2</b>
<b>11:30AM - 12:45PM</b>	<b>Lunch &amp; Learn Demo</b>
<b>12:45PM – 1:25PM</b>	<b>Workshop Sessions 3</b>
<b>1:35PM – 2:15PM</b>	<b>Workshop Sessions 4</b>
<b>2:25PM – 3:05PM</b>	<b>General Session II</b>
<b>3:15PM – 3:55PM</b>	<b>Workshop Sessions 5</b>
<b>4:00PM – 5:00PM</b>	<b>Open Forum/Networking</b>

9

## Keynote Speaker: Keith Hayashi, Interim Superintendent Hawai'i DOE



Keith T. Hayashi was appointed interim superintendent of the Hawai'i State Department of Education, effective Aug. 1, 2021. He will serve until the start date of a new superintendent to be appointed by the Board of Education.

Hayashi's 32-year career with the Department spans the school, complex area and state level. He has led Waipahu High School as principal since 2009, a position for which he has received numerous awards, including Hawai'i High School Principal of the Year and the collegiate Shirley B. Gordon Award of Distinction. He is credited with pioneering the Early College program in Hawai'i public schools and earned the distinction for Waipahu High as the state's first nationally recognized wall-to-wall academy model school.

Hayashi began his education career at Lehua Elementary as a teacher and went on to serve as a district resource teacher in Leeward O'ahu. He also served as a vice principal and principal at the elementary, middle and high school levels before becoming Pearl City-Waipahu Complex Area Superintendent. At the state level, he served as interim deputy state superintendent and as interim state superintendent in 2017. Hayashi earned his bachelor's degree in elementary education from the University of Hawai'i at Mānoa. He also holds two Master of Education degrees — in curriculum and instruction, and educational administration — from UH Mānoa.

10

## Keynote Speaker: The Honorable Richard T. Bissen, Jr.



Richard T. Bissen Jr. (Rick) is a recently retired Second Circuit Court Judge, who uses his intelligence and his heart to serve, protect and preserve his community and home. He is a member of the Hale Mua cultural group, the Royal Order of Kamehameha I, Kahekili Chapter IV.

He was a member of the Statewide Violence Against Women planning committee in the late 90's and has been an Instructor at the National Advocacy Center's Prosecutor's training facility on numerous occasions in Columbia, South Carolina. He produced a series of crime prevention videos and has been a speaker at schools, community organizations, conferences and conventions statewide on the Importance of Parenting. He has served as a member, director or officer with the Punana Leo O Maui Advisory Committee, Kamehameha Schools Maui Campus Advisory Committee, and the Pa'ia Elementary School, Lihikai Elementary School and Kamehameha Schools Maui Campus Parent Teacher Associations. Additionally, he has served as the Acting Director of the Department of Public Safety, the Board of Directors for the Maui United Way, Maui Memorial Medical Center Regional Board of Directors, and Big Brothers and Big Sisters, Maui Chapter.

Rick was a founding member of the Maui Drug Court Program in 2000 and a past member of the Hawai'i Juvenile Justice State Advisory Committee from 2003-2011. He has served as vice president of a non-profit organization overseeing federal monies for a mentoring program designed for young Hawaiian men on Maui and on the Hui O Wa'a Kaulua board of Directors.

11

## WORKSHOPS

### WORKSHOP OVERVIEW & INSTRUCTIONS:

Please note that there are two workshops available for each session.

Please go to the event confirmation email and access the Zoom virtual meeting links from there.

You will have the option of selecting whichever workshop best fits your needs.

#### WORKSHOP SESSION #1: 9:40AM - 10:30AM

- **(Session 1A) Children's Mental Health: Tips for Parents and Educators:** This workshop will provide a brief overview of children's mental health as we adjust to the new norms in face-to-face learning. We will examine the effects of the pandemic on children's well-being and provide resources for parents and educators to support children's mental health within developmental expectations. Led by Leslie Baunach, SCSP, and Alec Marentic, NCSP.
- **(Session 1B) PTA Money Matters...the Foundation:** This workshop will help you lay the foundation for your local unit's financial success. Learn tips and resources to help PTA/PTSA treasurers and other board members gain a better understanding of the important requirements to keep your local unit on financial track and in good standing. Learn about budgeting, insurance and liability, handling money, reporting, conducting the annual audit process, and more. Led by Hawai'i State PTSA Board Member: Sheri Fukushima, Treasurer.

12



# WORKSHOPS

## WORKSHOP SESSION #2: 10:40AM - 11:30AM

- **(Session 2A) Transformative Family Engagement:** PTA is all about engaging and empowering families to make every child's potential a reality! Through concrete examples from PTAs and reflection on your current practices, you will learn how to use the "4 I's" of transformative family engagement so that your PTA – and schools in your community – are treating every parent as a valued partner in their child's education. Led by National PTA Board Members: Cindy Gerhardt.
- **(Session 2B) Expand your Special Education (SPED) Knowledge:** This workshop will equip parents with information on the Hawai'i Department of Education Special Education process and services in Hawai'i public schools. Find out more about the process in Hawaii for requesting special education services for a child, as well as how Hawai'i is addressing learning loss (especially from the pandemic) for special education students. This workshop will cover the difference between IEP vs 509, as well as Accommodations vs Modifications, with examples in Hawai'i. Led by Susan Rocco and Rosie Rowe.

## WORKSHOP SESSION #3: 12:45PM - 1:25PM

- **(Session 3A) Boost Your PTAs Relevancy with Advocacy:** In order to build a better education system of the future, parents need to be at the table and engaged in positive relationships with their schools, lawmakers, and communities. HawaiiKidsCAN is a local non-profit organization that focuses on community innovation, student and parent engagement, and policy change. This session will cover the Advocacy 101 basics of organizing and mobilizing, an update on the 2022 legislative session, and some successful models for family engagement and support. Led by David Sun-Miyashiro, Founding Executive Director of HawaiiKidsCAN
- **(Session 3B) PTA Taxes... Hammering Out Financial Obligations:** Hammer out the details of PTA finances with this workshop covering advanced topics, such as IRS, Hawaii Department of Taxation, and Department of Commerce and Consumer Affairs (DCCA) obligations. Learn about the IRS 990 form, General Excise Tax (GET) filing, and DCCA filings. This workshop will ensure that your PTA protects its non-profit status and fulfills its legal responsibilities. Led by Hawai'i State PTSA Board Member: Patti Rabacal, President.

13

# WORKSHOPS

## WORKSHOP SESSION #4: 1:35PM - 2:15PM

- **(Session 4A) Building the Foundations of Aloha:** Join us and explore concepts of ALOHA (Akahai, Lōkahi, 'Olu'olu, Ha'aha'a, and Ahonui) as shared in the wisdom of Uncle Pono Shim and Auntie Pilahi Paki. In this session, we will share the deeper meaning of ALOHA, and why it is important for all of us -- parents, teachers, students, community supporters -- to develop a foundation of ALOHA upon which to build a meaningful community here in Hawai'i and beyond. We will share about the free, online Foundation of ALOHA program that offers families and educators opportunities for social connection, creative outlets, and Hawai'i values-based lessons to support our journey to return our homes, schools, and selves to centers for learning and healing, as well as other options for getting involved in family-friendly, local healing efforts that benefit land, sea, sky and people across Hawai'i. Led by Miki Tomita and Hye Jung Kim Tano from Education Incubator.
- **(Session 4B) Bylaws...the Framework of your PTA:** How familiar are you with your local unit's bylaws? This important living document is designed to provide the structure and define the specific rules under which PTA functions. Bylaws provide the framework for a smooth-running association. In addition to gaining a better understanding of bylaws, this workshop will also cover the process to review and amend local unit bylaws. Led by Liz Sager, Hawai'i State PTSA Past President.

## WORKSHOP SESSION #5: 3:15PM – 3:55PM

- **(Session 5A) Building Your Team/Membership Matters:** Learn how building a relevant and modern PTA, attracts new and diverse members, engages volunteers, and meets community needs. Discuss simple yet powerful membership recruitment and retention ideas that have been proven to work when trying to embrace today's families. Keep your PTA units strong and viable by retaining the members you have worked hard to recruit and by attracting new members. Workshop attendees will also hear from a panel of local unit leaders sharing membership successes. Led by Liz Sager, Hawai'i State PTSA Past President.
- **(Session 5B) Saving, Planning, Are you ready for College, Financially?:** The cost of college can be daunting, and many families are not prepared for these expenses. This workshop will review options for parent and student. No matter your age, income level, or what your current funds are, college CAN be in your future. There are options, programs, support, and lifestyle changes that can help. This workshop will review different types of saving programs to get you started, increase the funds you already have, and options if saving is too late. Above all, this session will cover lifestyle changes that will help you think saving isn't as hard as you think. It will save you money and time and hopefully provide a new perspective on the idea of saving. Led by Ashley Brodeur, Branch Manager, Central Pacific Bank.

14

### Rules of the Hawai'i State PTSA 94<sup>th</sup> Annual Convention

Items Indicated with an asterisk (\*) are Convention Standing Rules that have been adopted by the Board of Directors as an emergency action to enable Hawai'i State PTSA to conduct business by way of virtual meetings and are hereby included in the 2022 Hawai'i State PTSA Convention Rules:

#### Admission

1. **\*Login Information:** An e-mail will be sent to every convention attendee at least 12 hours before the start of the Convention. This email will include access to each part of the virtual event (general sessions, workshops, and networking session), via URL, and codes necessary to connect to the Internet meeting service, and, as an alternative and backup to the audio connection included within the Internet service, the phone number and access code(s) the member needs to participate aurally by telephone. You shall also receive a copy of, or a link to, these rules.
2. **\*Sign In/Sign out:** Members shall identify themselves as required to sign into the Internet meeting service and shall maintain Internet and audio access throughout the meeting whenever present; shall mute their microphone when not speaking and shall sign out upon any departure before adjournment.
3. **\*Technical Requirements and Malfunctions:** Each member is responsible for his or her audio and Internet connections; no action shall be invalidated on the grounds that the loss of, or poor quality of, a member's individual connection prevented participation in the meeting.
4. **\*Quorum:** The presence of credentialed delegates verified at the time of login as provided the Internet meeting service may be used to determine the presence of a quorum.
5. **\*Forced Disconnections:** The chair or facilitator may cause or direct the disconnection or muting of a member's connection if it is causing undue interference with the meeting. The chair's decision to do so, which is subject to an undebatable appeal that can be made by any member, shall be announced during the meeting and recorded in the minutes.

#### Addressing the Convention and Voting Procedures

1. **Qualifications:** Only qualified delegates will be eligible to vote on convention business.
2. **\*Assignment of the Floor:** To seek recognition by the chair, a member shall signal the chair using the designated feature appropriate to the Internet meeting service being used. Upon assigning the floor to a member, the member may then unmute and address the chair. To claim preference in recognition, another member who had been seeking recognition may promptly seek recognition again, and the chair shall recognize the member for the limited purpose of determining whether that member is entitled to preference in recognition.
3. **\*Motions Submitted in Writing:** A member intending to make a main motion, to offer an amendment, or to propose instructions, shall, before or after being recognized, post the motion in writing to the online chat area designated by the facilitator for this purpose.
4. **\*Motions:** The meeting facilitator shall designate an online area for the display of the immediately pending question and other relevant pending questions (such as the main motion, or the pertinent part of the main motion, when an amendment to it is immediately pending); and, to the extent feasible, the meeting facilitator, or any assistant appointed by him or her for this purpose, shall cause such questions, or any other documents that are currently before the meeting for action or information, to be displayed therein until disposed of.
5. **\*Voting:** Votes shall be taken by a virtual voting feature of the Internet meeting service, unless a different method is ordered by the Board or required by the rules. When required or ordered, other permissible methods of voting are by electronic roll call or by audible roll call. The chair's announcement of the voting result shall include the number of members voting on each side of the question and the number, if any, who explicitly respond to acknowledge their presence without casting a vote. Business may also be conducted by unanimous consent.
6. **General Communication:**
  - A voting member may speak for only two minutes at one time on any question under discussion and only twice on the same question. No member will speak for the second time until all delegates seeking recognition have had an opportunity to speak.
  - No business item may be "on the floor" for more than fifteen minutes (inclusive of all points of order and points of information). Within this time frame, the chair shall recognize delegates both for and against debate in alternating order. In order to add debate time, a delegate must move to extend debate, which requires a second, is amendable, is not debatable, requires a 2/3 vote, and must be done BEFORE the initial fifteen (15) minutes is over.

### Rules of the Hawai'i State PTSA 94<sup>th</sup> Annual Convention

#### Addressing the Convention and Voting Procedures (continued)

- A motion calling for the previous question or for all previous questions may not be made by a delegate who has just spoken. Subsequent motions may not be made and are not in order until the opportunity has been given to at least two delegates to speak for and against the pending question.
- Announcements will be made only by the presiding officer or a delegate duly recognized by the presiding officer. The delegate making announcements will be unmuted to make announcements.
- At the discretion of the presiding officer, persons other than official delegates may be given the floor only for discussion, but must adhere to rules above.

#### Nominations and Election Procedures

1. **Nomination Process:** The chair of the Nominating and Leadership Development Committee shall present the qualifications of all candidates, including those nominated from the floor, limited to two minutes for each candidate.
2. All nominees from the floor must have presented their qualifications to the president prior to the deadline of 11:59pm, Wednesday, April 27, 2022.
3. All voting delegates shall be provided a link to the electronic ballot to participate in the voting.
4. A majority vote (more than half of the members present and voting) shall be required for election. If a candidate does not receive a majority of the votes cast, re-balling will take place. If there are more than two candidates for an office and a candidate does not receive a majority vote on the first ballot, re-balling will take place between the two candidates receiving the highest number of votes.
5. The report of the Election Committee shall be presented at the business session following the election. The presiding officer shall declare who has been elected.

#### General Rules

1. **\*Conduct:** All registered accredited convention attendees are expected to be respectful of others. Harassment and other misconduct will not be tolerated. Hawai'i State PTSA, at its sole discretion, reserves the right to accept or decline an individual's registration for the Convention and General Meeting entry.
2. **\*Access:** Hawai'i State PTSA reserves the right to prohibit entry or remove any individual whether registered or not, whether they are registered accredited voting delegates, registered alternates, or any other PTA member registrants, presenters, or guests who in Hawai'i State PTSA's sole opinion are not keeping with the character and purpose of the Convention including General Meetings.
3. **\*False Pretenses:** Without limiting the aforementioned, Hawai'i State PTSA reserves the right to confiscate convention access to anyone who has registered or gained access under false pretenses, provided false information, or for any other reason whatsoever that they deem is caused under the circumstances. In such a case, if any registration/vendor fees have been paid, no refunds will be given. No refund of delegate or vendor fees will be given in the case of a removal for such cause.
4. **\*Etiquette:** All electronic devices, with the exception of the device being used to view the virtual Convention, should be turned to silent, vibrating mode, or off during all live General Sessions and workshops.
5. **\*Meeting Minutes:** Minutes of the convention shall be approved by a committee of three members of the Board of Directors, appointed by the president. Minutes shall be circulated no later than sixty (60) days following the close of convention.

#### Conduct of the Meetings

"Roberts Rules of Order Newly Revised Current Edition" shall govern all convention business, unless there is a conflict with the Bylaws of the Hawai'i State PTSA or the above convention rules, in which case the bylaws or convention rules will prevail.

15

## Hawai'i State PTSA 2021 – 2022 Annual Membership Awards

### Highest Growth & Recruitment Moanalua High School PTSA

### Highest Percentage Membership Increase Koloa Elementary School PTSA

### Increased (10%+) Membership Growth & Recruitment

Aikahi PTA  
Ernest B. DeSilva PTA  
Highlands Intermediate School PTSA  
Kaimuki High School PTA  
Kainalu PTA  
Kalihi-Waena PTA  
Keaau Middle PTSA  
Kekaha Elementary PTA  
Kihei Elementary School PTSA  
Lahainaluna High School PTSA  
Makalapa Elementary PTA  
Makawao PTA  
Moanalua High School PTSA  
Mountain View Elementary School PTSA  
Noelani PTA  
Princess Nahi'ena'ena PTA  
Waiakea High School PTSA  
Waiakeawaena PTA  
Wilcox Elementary PTA

16



## Reflections Winners: Primary (Grades K-2)

1st	Visual Arts	Kaizen Kami	Waiakeawaena PTA
2nd	Visual Arts	Wells Szabo Hwang	Pomaika'i PTSA
3rd	Visual Arts	Aria Alviedo	Pomaika'i PTSA
1st	Literature	Asha Singh	Kalaheo Elementary School PTSA
1st	Music Composition	Ramses Lawson	Kalaheo Elementary School PTSA

17

## Reflections Winners: Intermediate (Grades 3-5)

1st	Visual Arts	Case Shiroma	Waiakeawaena PTSA
2nd	Visual Arts	Mason Collo-Orozco	Pomaika'i PTSA
3rd	Visual Arts	Ella Kalauawa	Kalaheo Elementary School PTSA
1st	Photography	Raine Kaneko	Waiakeawaena PTSA
2nd	Photography	Maya Kleypas	Kalaheo Elementary School PTSA
3rd	Photography	Jeremy Fujii	Waiakeawaena PTSA
1st	Literature	Lucile Millard	Kalaheo Elementary School PTSA
2nd	Literature	Deanna Lee Rodrigues	Pomaika'i PTSA
3rd	Literature	Rilyn Hansen-Capitano	Pomaika'i PTSA
1st	Music Composition	Kate Edwards	Koloa School PTA
2nd	Music Composition	Damien Balinbin	Pomaika'i PTSA
3rd	Music Composition	Rilyn Hansen-Capitano	Pomaika'i PTSA
1st	Dance Choreography	Rynlie Hansen-Capitano	Pomaika'i PTSA
2nd	Dance Choreography	Rilyn Hansen-Capitano	Pomaika'i PTSA
1st	Film Production	Lucile Millard	Kalaheo Elementary School PTSA
2nd	Film Production	Maya Raine	Kalaheo Elementary School PTSA
3rd	Film Production	Rilyn Hansen-Capitano	Pomaika'i PTSA

18

## Reflections Winners: Middle School (Grades 6-8)

1 <sup>st</sup>	Visual Arts	Lia Sorenson	Highlands Intermediate School PTSA
2nd	Visual Arts	Lia Sorenson	Highlands Intermediate School PTSA
3rd	Visual Arts	Kacie Nakasone	Kawanakoa Middle School PTSA
1st	Photography	Nelliana Taase-Sauafea	Kawanakoa Middle School PTSA
2nd	Photography	Alexandrea Escalante	Keaau Middle School PTSA
1st	Literature	Rhys Wong	Kawanakoa Middle School PTSA
2nd	Literature	Justin Chung	Kawanakoa Middle School PTSA
3rd	Literature	Bella Cutter	Kawanakoa Middle School PTSA

19

## Reflections Winners: High School (Grades 9-12)

1st	Visual Arts	Kyle Justo	Pearl City High School PTSA
2nd	Visual Arts	Jadelyn Fujii	Lahainaluna High School PTSA
3rd	Visual Arts	Makayla Brandy	Lahainaluna High School PTSA
1st	Photography	Jordyn Tagudan	Friends of Kaiser High School PTSA
2nd	Photography	Lauren Jose	Moanalua High School PTSA
3rd	Photography	Evan Kawasaki	Friends of Kaiser High School PTSA
1st	Literature	Luke Bender	Friends of Kaiser High School PTSA
2nd	Literature	Ethan Yang	Friends of Kaiser High School PTSA
3rd	Literature	Moana Glassco	Friends of Kaiser High School PTSA
1st	Music Composition	Dylan Sukhabut	Friends of Kaiser High School PTSA
2nd	Music Composition	Trevor Hyun	Friends of Kaiser High School PTSA
3rd	Music Composition	Jhiro Federik Calso	Keaau High School PTSA
1st	Dance Choreography	Sara Brekke	Moanalua High School PTSA
2nd	Dance Choreography	Kiryn Horle	Moanalua High School PTSA
3rd	Dance Choreography	Xiaonan "Tiffany" Trinh	Moanalua High School PTSA
1st	Film Production	Vivienne Hill	Friends of Kaiser High School PTSA
2nd	Film Production	Taina Luhia	Friends of Kaiser High School PTSA
3rd	Film Production	Trevor Takeno	Moanalua High School PTSA
1st	Special Artist	Hailey Parker	Friends of Kaiser High School PTSA
2nd	Special Artist	Eugene Ham	Friends of Kaiser High School PTSA

20

To the Board of Directors of  
Hawaii Congress of Parents, Teachers, and Students  
Honolulu, Hawaii

Management is responsible for the accompanying financial statements of Hawaii Congress of Parents, Teachers, and Students dba Hawaii State PTSA (a nonprofit organization), which comprise the statement of assets, liabilities, and net assets—cash basis as of June 30, 2021, and the related statement of support, revenues, expenses, and other changes in net assets—cash basis, and the statement of functional expenses—cash basis, for the year then ended, and for determining that the cash basis of accounting as an acceptable financial reporting framework. I have performed a compilation engagement in accordance with Statements on Standards for Accounting and Review Services promulgated by the Accounting and Review Services Committee of the AICPA. I did not audit or review the financial statements nor was I required to perform any procedures to verify the accuracy or completeness of the information provided by management. Accordingly, I do not express an opinion, a conclusion, nor provide any form of assurance on these financial statements.

The financial statements are prepared in accordance with the cash basis of accounting, which is a basis of accounting other than accounting principles generally accepted in the United States of America.

Management has elected to omit substantially all the disclosures ordinarily included in financial statements prepared in accordance with the cash basis of accounting. If the omitted disclosures were included in the financial statements, they might influence the user's conclusions about the Organization's assets, liabilities, equity, revenues, and expenses. Accordingly, these financial statements are not designed for those who are not informed about such matters.

Haiku, Hawaii  
November 16, 2021

**HAWAII CONGRESS OF PARENTS, TEACHERS, AND STUDENTS**  
**dba HAWAII STATE PTSA**

Statement of Assets, Liabilities, and Net Assets - Cash Basis  
June 30, 2021

**ASSETS**

<b>CURRENT ASSETS</b>	
Cash in Savings and Checking Accounts	\$ 52,812
<b>PROPERTY AND EQUIPMENT</b>	
Furniture and Equipment	1,009
Less: Accumulated Depreciation and Amortization	(1,009)
Net Property and Equipment	-
<b>TOTAL ASSETS</b>	<b>\$ 52,812</b>

**LIABILITIES AND NET ASSETS**

<b>LIABILITIES</b>	\$ 0
<b>NET ASSETS</b>	
Unrestricted Net Assets	52,812
<b>TOTAL LIABILITIES AND NET ASSETS</b>	<b>\$ 52,812</b>

21

**HAWAII CONGRESS OF PARENTS, TEACHERS, AND STUDENTS**  
**dba HAWAII STATE PTSA**

Statement of Support, Revenues, Expenses and Changes in Net Assets - Cash Basis  
For the Year Ended June 30, 2021

<b>REVENUES, GAINS, AND OTHER SUPPORT</b>	
Membership Dues	\$ 19,125
Insurance Reimbursement	7,295
Convention Registration and Exhibitors	295
Royalties, Interest, and Other Income	300
<b>Total Support and Revenues</b>	<b>27,015</b>
<b>EXPENSES</b>	
<b>Program Services</b>	
State Convention	1,459
Leadership Training	4,232
Reflections	2,492
Membership Benefits	2,272
<b>Total Program Services</b>	<b>10,455</b>
<b>Supporting Services - Management and General</b>	<b>17,139</b>
<b>Total Expenses</b>	<b>27,594</b>
<b>Change in Net Assets</b>	<b>(579)</b>
<b>Net Assets at Beginning of Year</b>	<b>53,391</b>
<b>Net Assets at End of Year</b>	<b>\$ 52,812</b>

**HAWAII CONGRESS OF PARENTS, TEACHERS, AND STUDENTS**  
**dba HAWAII STATE PTSA**

Statement of Functional Expenses - Cash Basis  
For the Year Ended June 30, 2021

	Program Services					Supporting Services	Total
	State Convention	Membership Benefits	Reflections	Leadership Training	Total	Management and General	
Salaries and Wages	\$ 452	\$ 905	\$ 151	\$ 151	\$ 1,609	\$ 13,421	\$ 15,080
Storage Rent	489	326	326	1,467	2,608	652	3,260
Supplies	35	514	762	564	1,875	28	1,903
Payroll Taxes	44	88	15	15	162	1,298	1,460
Postage and Printing	266	236	494	250	1,246	112	1,358
Meetings and Conventions	-	-	-	1,280	1,280	-	1,280
Professional Fees	-	-	-	-	-	1,325	1,325
Awards and Gifts	-	80	568	-	648	-	648
Mileage Reimbursement	78	52	114	233	477	104	581
Taxes, Dues and Fees	-	-	-	-	-	23	23
Telephone	76	51	51	229	407	101	508
Employee Benefits	5	11	2	2	20	157	177
Website	14	9	9	41	73	18	91
<b>Total Expense</b>	<b>\$ 1,459</b>	<b>\$ 2,272</b>	<b>\$ 2,492</b>	<b>\$ 4,232</b>	<b>\$ 10,455</b>	<b>\$ 17,139</b>	<b>\$ 27,594</b>

22

## 2022 Slate of Nominees & Candidate Bios

### Vice President of Membership – Michelle Letchford

Michelle Letchford has been with the PTSA for a total of 11 years. 7 years with the Kailua Elementary School PTSA and 7 years with the Kalaheo High School PTSA, and 2 years on the Hawai'i State PTSA Board. She has experience in serving as a PCNC (Parent Community Networking Center Parent Facilitator), a Correspondence Secretary, Secretary, Vice President, and President. She is currently serving a second term as the Windward Region Director for the Hawai'i State PTSA. Michelle is also a member of the first graduating class of The Hawai'i PLTI (Parent Leadership Training Institute).

Michelle is married to her wonderful husband Todd for 26 years and they have 2 beautiful daughters. She strongly believes that it takes a village to raise a child and that is why she is certified in facilitating 2 different parenting classes: Positive Solutions for Families (CSEFEL) (ages 0 – 5yrs.) and Loving Solutions (ages 5yrs. – 10yrs.). Being a volunteer and providing valuable information, references, & tools to parents is what she loves to do. By electing her to the Hawai'i State PTSA Board, she would have the opportunity to reach out and help more parents and their children.

### Vice President of Legislation – Chace K. M. Shigemasa

Chace K. M. Shigemasa is an Assistant Store Manager of Lowe's Home Improvement at the Honolulu store. He is also pursuing his bachelor's degree in Business Administration at Strayer University. Before joining Lowe's, Chace has held leadership positions in various industries such as Telecommunications, Market Research and Medical Administration. Chace has a passion for Community Service and serves in multiple capacities in various community organizations. Chace has been the Chairman of the Aliamano-Salt Lake-Foster Village-Airport Neighborhood Board No. 18 for the past five years, Chairman of the Oahu Metropolitan Planning Organization Citizens Advisory Committee, Member of the Honolulu Board of Water Supply Stakeholder Advisory Group, Member of the Honolulu Stormwater Utility Stakeholder Advisory Group, Advisory Board Member of the Inspiration Hawaii Museum, and most recently served as the Vice-Chair of the Honolulu Reapportionment Commission.

Chace serves as the Vice President of Salt Lake Community Ohana, a Community PTA.

### Secretary – Kellie Heatherly

Kellie is the spouse of an active-duty Naval officer and has moved eleven times since she and Bill were married in 1992. With three wonderful children, one constant in all the moves has been involvement in the local community where the family has lived. Kellie has served in PTA or parent group positions at the elementary, middle, and high school levels. She has been President, Reflections Chair, Secretary, Jog-a-thon Chair, as well as initiated and organized Veterans' day programs at three different schools and started a community service club in Virginia. Kellie currently is the immediate Past President of the Radford High School PTSA and the Secretary of the Hawai'i State PTSA. She loves all things outdoors, especially swimming, surfing, paddling, cycling, and hiking. Kellie strongly believes that aloha is the answer and feels very fortunate to call Hawai'i home.

### East Hawaii Regional Director – Cheryl Kiefer

As a retired teacher who taught for over 20 years at the middle school level, Cheryl Kiefer first became involved with the Keau Middle PTSA fifteen years ago in the role of teacher liaison. In her current role of treasurer, Cheryl has worked hard to get Keau Middle PTSA back on fiscal track. Cheryl's PTSA experience includes involvement with fundraising (Scholastic Book Fairs and School Kine Cookie Sales), assisting with the 8<sup>th</sup> grade banquet, and helping to coordinate the PTA Reflections art program.

Cheryl stepped into the East Hawai'i Region Director position at the 2016 Hawai'i State PTSA Convention. She would like to continue in this capacity, with the goal of assisting other struggling PTSAs and seeing the Big Island be an outstanding representation of parents, students, and teachers in the ever-changing landscape of education.

### Windward Oahu Region Director – Tony Rutledge

Tony Rutledge is married with one child. He has been a regular volunteer at his child's schools. Tony has held the role of Vice President and President at Enchanted Lake PTA, as well as Vice President of Kailua Intermediate PTSA. He currently sits on the Keolu Elementary School Community Council (SCC).

### Central Oahu Region Director\* – Jodi Fujimoto

Jodi Fujimoto has been serving on the board of a local chapter of the Hawai'i State PTSA for the last 10 years. She was most recently appointed as the Central Oahu Region Director for our Hawai'i State PTSA and looks forward to actively working with our Central Region PTAs to make connections and collaborate to carry out the goals and purposes of our State and National PTA.

### Vice President of Programs – Vacant\*\*

### West Hawaii Region Director – Vacant\*\*

**PLEASE NOTE:** Anyone interested in running for one of the positions up for election at the 2022 Convention, including the vacancies\*\*, may "run from the floor" by notifying Patti Rabacal, Hawai'i State PTSA President, by no later than 11:59pm on Wednesday, April 27, 2022 by email at [president@hawaiistatptsa.org](mailto:president@hawaiistatptsa.org). In your email, please copy [mauidirector@hawaiistatptsa.org](mailto:mauidirector@hawaiistatptsa.org) and [hstatptsa@gmail.com](mailto:hstatptsa@gmail.com).

23

Mahalo to our Middle School Level Sponsor!



**THE NED SHOWS**  
There's a Champion in Every Kid!®

And a big thank you to this year's keynote speakers, workshop presenters, and everyone who helped make this event possible!

24

Mahalo to our Convention Advertiser!



25

**Mahalo for attending our Virtual Hawai'i State PTSA Convention! We appreciate your time and commitment to Hawai'i's keiki. We look forward to working with you in the upcoming year.**



Hawai'i State PTSA, PO Box 459, Pearl City, HI 96782; [www.hawaiistateptsa.org](http://www.hawaiistateptsa.org)

26