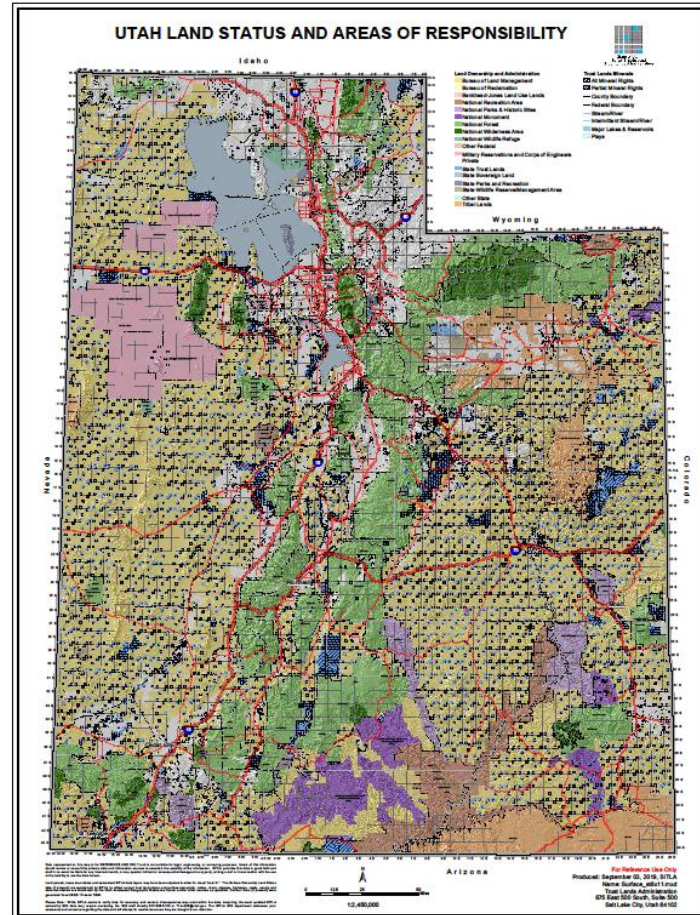


School Community Councils and your PTA

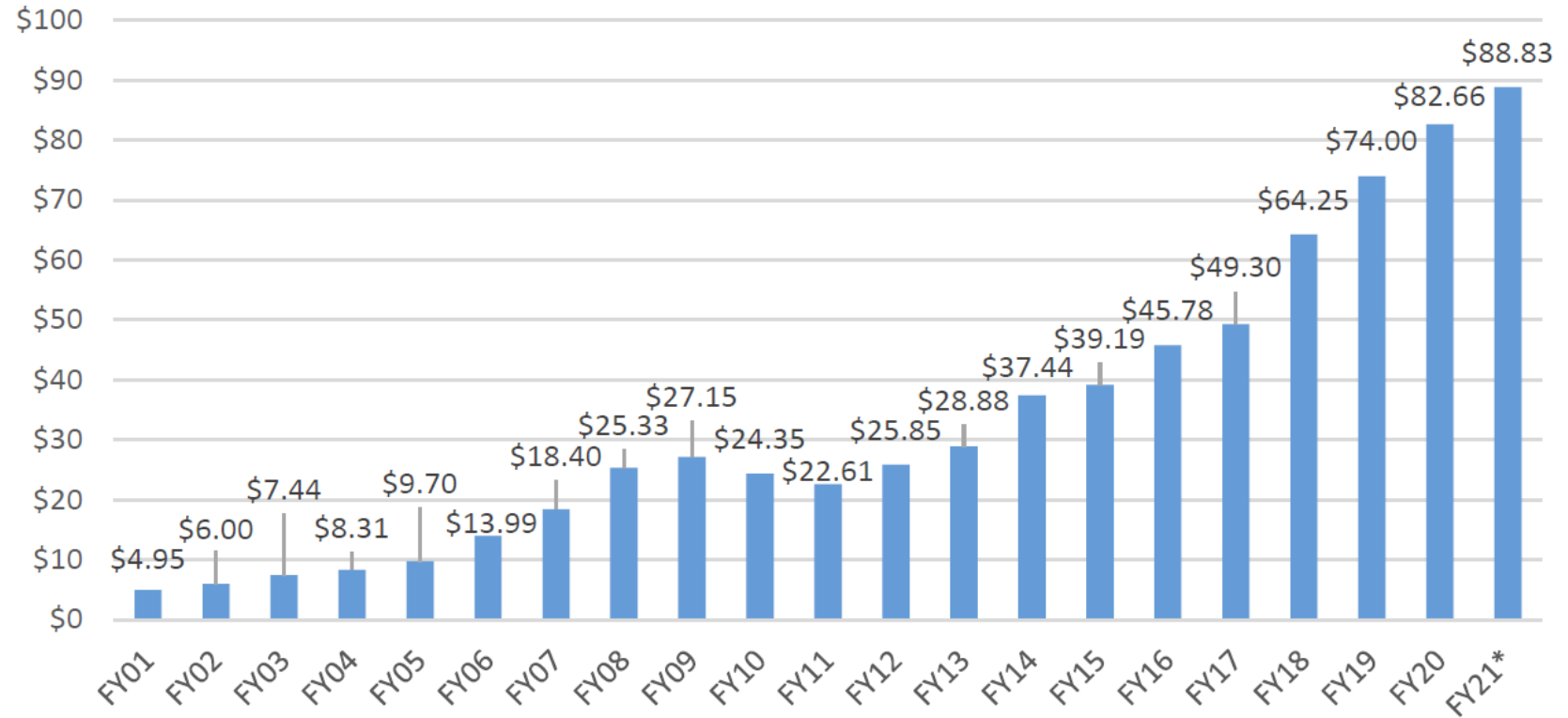
Natalie Gordon
School Trust Specialist
Utah State Board of Education

School Trust Lands



Distribution from The Permanent State School Fund

Annual Statewide Distribution
in Millions of Dollars



SITLA

Manages Trust
Land

SITFO

Invests Trust
Fund

School
Children's
Trust
Section
USBE

Allocates Trust
Funds

**Permanent
School
Fund**

SCCs

(advisory to local
boards)

Plans for local
academic
achievement

TLAC (Trust Lands
Advisory Committee)

Land Trust Protection and
Advocacy Office

The trustees that manage the land and fund

SITLA



SITFO





THE BENEFICIARY

**Mandatory
Data Review
to Identify
Critical
Academic
Needs**

**Consult with
Principal on
Teacher and
Student
Success Plan**

**Prepare and
Implement
School
LAND Trust
Plan**

**Digital
Citizenship
and School
Safety**

Council Responsibilities

THE PURPOSE OF SCHOOL COMMUNITY COUNCILS

To build consistent, effective collaboration and communication among parents, employees and administrators

Provide a forum for parents to be actively involved with the school in their children's education

To identify academic needs and implement interventions that will measurably improve student performance

What can my PTA do to help make our School
Community Council successful?

What can I do?

WWW.SCHOOLS.UTAH.GOV/SCHOOLLANDTRUST

Natalie.Gordon@Schools.Utah.Gov

801-538-7533

Paula.Plant@Schools.Utah.Gov

801-538-7555

Follow Utah PTA



Facebook

Groups you can join:

- Utah PTA Advocacy
- Utah PTA Super Secondary
- Utah PTA Excellent Elementary
- Utah PTA Treasurers
- Utah PTA Reflections
- Utah School Community Councils



Twitter



Pinterest



YouTube



Instagram

Utah PTA One Voice App

Sponsors

