



How SelectHealth can support your PTA

Emmalee Boyland, Community Relations Coordinator and B3 Program Manager

Who is SelectHealth?

- Not-for-profit health plan
- Integrated health system with Intermountain Healthcare
- Serving members in Utah, Idaho, and Nevada

“Helping People Live the Healthiest Lives Possible.®”

What is Community Relations?

Implement community outreach programs, organize events, write and release publicity materials, and develop strategies that promote living a healthy life.



B3: Brain Body Boost

<https://www.youtube.com/watch?v=OPzQ8gxeFS8&t=15s>



- School-based physical activity program
- 4th, 5th, 6th grades
- Helps with required curriculum
- Online platform
- Partners



Jenny Smith

Intermountain Elementary

Your Class

View Class

10 Students

Your Top 3 Students

Last week



Mary Jones

420 min



Matthew Stanger

420 min



Keith Brennan

420 min

Your Rankings

View Leaderboard

1st place

Intermountain Elementary

5th place

SelectHealth Test District

420 min

Weekly Class Average

Current Strand



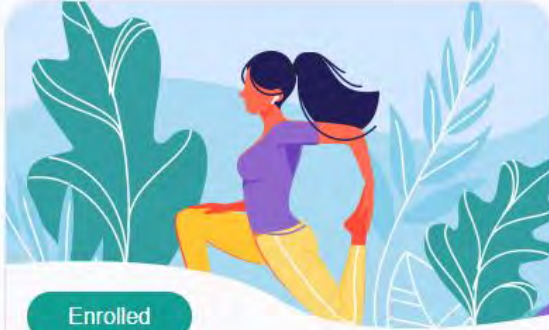
Safety and Disease Prevention

Strand Checklist

Complete in 29 days

Teacher Reward

- 80% of students have recorded physical activity minutes online
- 1 lesson plan was reviewed with students
- At least 90 minutes of physical activity each week (this can include PE)



Enrolled

Complete in ~44 day

Health Foundations and Protective Factors of a Healthy Self

6/10

Tasks Completed

[View](#)



Enrolled

Complete in ~59 day

Human Development

6/10

Tasks Completed

[View](#)



Completed

Completed in 33 days

Mental and Emotional Health

7/10

Tasks Completed

[View](#)



Completed

Completed in 1 day

Nutrition

7/10

Tasks Completed

[View](#)



Enrolled

Complete in 29 days

Safety and Disease Prevention

3/10

Tasks Completed

[View](#)



Enrolled

Complete in ~44 day

Substance Abuse Prevention

2/10

Tasks Completed

[View](#)

SPEND POINTS

School Supplies

My Wallet 50

My Cart [View Cart](#)

EXPO Low Odor Dry Erase Markers, Ch... 13

Total Points in Cart 13



BIC Round Stic Xtra Life Ballpoint Pen, Medium Point 144 ct

12 Points

IN STOCK



PILOT G2 Premium Refillable & Retractable Rolling Ball Gel Pens, Bold Point, Black Ink, 12 Count (31256)

13 Points

IN STOCK



Paper Mate Gel Pens | InkJoy Pens, Medium Point, Assorted, 14 Count

13 Points

IN STOCK



Chat

Teacher Leaderboard

See how your class ranking compares to other classes in your school & classes in your district. Want to improve your classroom ranking? Check out the [Resources](#) page!

View

My School My District

Your Current Rank: **9th**



1st Place
Belle Kelly
Wilson Middle School
7883 minutes



2nd Place
Isaiah Beck
Wilson Middle School
7236 minutes



3rd Place
Herman Garner
Wilson Middle School
6937 minutes

Rank	Name	School Name	Minutes
4	Alberta Campbell	Wilson Middle School	6850
5	Louis Hart	Wilson Middle School	6850
6	Sophia Gomez	Wilson Middle School	6850
7	Julian Guerrero	Wilson Middle School	6850
8	Sophia Gomez	Wilson Middle School	6850
9	★ Susan Smith	Wilson Middle School	6850
10	Leila Thornton	Wilson Middle School	6850
11	Nicholas Ferguson	Wilson Middle School	6850
12	Jordan Torres	Wilson Middle School	6850



Teacher Resources

These resources are provided as a reference in support of strand tasks and lesson plans.

Helpful Links



Human Development
Puberty & Growing Up (PCH)

[Read More](#)



Health Foundations and Protective Factors...
Optimism

[Read More](#)



Mental and Emotional Health
Mindfulness Exercises

[Read More](#)

Student Data Security

- Partnering with Student Data Privacy Auditor
- Meeting all policy and legal requirements
- Student information collected:
 - First name
 - Last name
 - Teacher's name
- Ensuring B3 is safe and secure



← Back

Home




Lauren Smith
Username: LSmith

Classroom Rank **8th Place** Schoolwide Rank **8th Place**

Weekly Goal Set Goal

235 / 420 min



Neutral

Enter Minutes

Last Week: 01 Jun - 07 Jun 2020 < >

Mon 1 Jun	Tue 2 Jun	Wed 3 Jun	Thu 4 Jun	Fri 5 Jun	Sat 6 Jun	Sun 7 Jun
25 min	100 min	60 min	35 min	0 min	120 min	15 min

Total Time: 355 min

Top Dog Awards

- Must complete 4/6 Health Strands
- Winner is based on average number of physical activity minutes per student
- Grant money for your class/school
 - PE Equipment or school supplies
 - Improvements to health environment of classroom/school
- Motivation for students to get active and log minutes!

Questions?



A group of five diverse young adults (three men and two women) are sitting on a dark-colored couch in a bright, modern living room. They are engaged in a conversation, with some looking towards each other and others looking slightly away. The scene is overlaid with a semi-transparent dark grey rectangle containing the text 'SelectHealth Awards'.

SelectHealth Awards



What are the SelectHealth Awards?

- A way to recognize and award organizations in the community that work to improve health, build strong communities, or provide services for underserved populations.

Award Details

- \$3,000 plus a marketing package worth over \$20,000
- Utah and Idaho
- Award luncheon





Who can apply?

- If your PTA group meets the criteria below, you're eligible:
 - Promotes health & wellbeing
 - Assists individuals with special needs
 - Creates safe environments
 - Builds strong communities
 - Supports the underserved
 - Supports equity and inclusion
- Review FAQs on selecthealth.org

Past Winners

- Ephraim Middle School (2019)
- https://www.youtube.com/watch?v=-LOgiDdobUM&list=PLreDKAbjWJAXy6RUL_5e_qDc2ALTlhH3J&index=7
- Tooele County School District (2020)
- <https://www.youtube.com/watch?v=WZl4315TqWU&list=PLreDKAbjWJAVgNs2Yuu8ZX6Uol2jxyb7y&index=9>

Questions about SelectHealth Awards?



CHIP



There are still over
80,000 uninsured
children in Utah



What is CHIP?

- Children's Health Insurance Program
- State health insurance plan for uninsured Utah kids and teens
- Funded by the state and federal governments



CHIP covers:

- Well-child exams
- Immunizations
- Doctor visits
- Hospital and emergency care
- Prescriptions
- Hearing and eye exams
- Mental health services
- Dental care

2020 MAXIMUM INCOME GUIDELINES

FAMILY SIZE	PER MONTH	PER YEAR
2*	\$2,874	\$34,488
3	\$3,620	\$43,440
4	\$4,367	\$52,404
5	\$5,114	\$61,368
6	\$5,860	\$70,320
7	\$6,607	\$79,284

*Single parent with one child

Applying for CHIP

- Online
- Call for an application
 - Healthcare.gov: 1-800-318-2596
 - UT Dept. of Health: 1-877-543-7669
- Coverage lasts for 12 months



Enrollment Assistance



- There are individuals certified to assist with CHIP and Medicaid applications
- “Certified Application Counselor”
- “Enrollment Specialist”
- “Navigator”

What can we do together?

- I need your help!
- Some ideas:
 - Back-to-school nights where enrollment assistance is provided onsite
 - Host “Healthcare Help” nights or family nights
 - Distribution of information to families/students
- What are your thoughts?

Questions?



Thank you!

- Contact information
 - Emmalee Boyland
 - Emmalee.priceboyland@selecthealth.org
 - 801-442-8274

Follow Utah PTA



Facebook

Groups you can join:

- Utah PTA Advocacy
- Utah PTA Super Secondary
- Utah PTA Excellent Elementary
- Utah PTA Treasurers
- Utah PTA Reflections
- Utah School Community Councils



Twitter



Pinterest



YouTube



Instagram

Utah PTA One Voice App

Sponsors

