

Aquatic & Wetland Invasive Species

Jason Granberg

Invasive Plants

Maureen Kalscheur

Aquatic Invasive Species Monitoring

Jared Urban

State Natural Areas

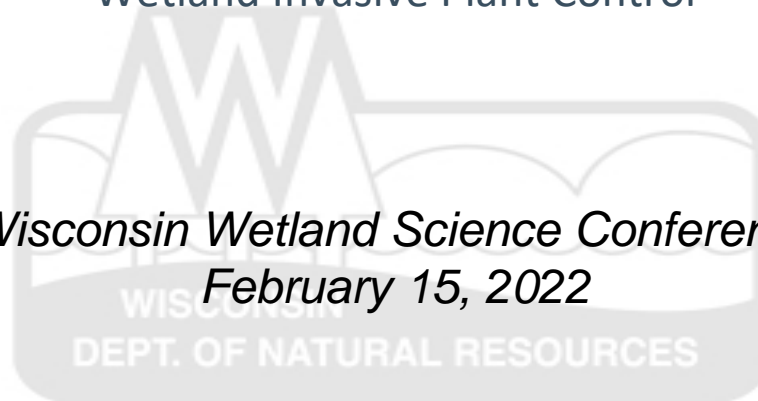
Madison Johansen

Aquatic Plant Management

Matt Puz

Wetland Invasive Plant Control

Wisconsin Wetland Science Conference
February 15, 2022



NR40

- Lists
- Classifies
- Regulates
- Currently under revisions

Business Licenses & Regulations Recreation Env. Protection Contact Join DNR

Invasive species rule – NR 40

The invasive species rule (Wis. Adm. Code ch. NR 40) makes it illegal to possess, transport, transfer, or introduce certain invasive species in Wisconsin without a permit. Everyone is responsible to comply with these regulations. What you need to do as an individual, business, or organization may vary depending on your type of work and activities. The regulated species list and the details of the rule are shown in the tabs below.

View the [full text of the invasive species rule](#) [exit DNR].

What the rule does

Species list

Compliance

Business resources

Background

Regulated species list

The invasive species rule regulates species from several groups. You can browse the list by species groups below to learn more about each regulated species and methods of identification and control. You can also view and print a [complete list of the regulated species](#) [PDF] or a [list of plants only](#) [PDF].

Regulated invasive species by group

Plants	Algae and cyanobacteria
Aquatic invertebrates (except crayfish)	Fish and crayfish
Terrestrial and aquatic vertebrates (except fish)	Terrestrial invertebrates and plant disease-causing microorganisms
Fungus	

Invasive species

Learn
about invasive species in Wisconsin.

Subscribe
to the invasive species rules and regulations email list.

Report
an invasive species in your area.

Order
invasive species publications.

Laws & Policies

- [Invasives Rule – NR 40](#)
- [Boats & Bait](#)
- [Firewood](#)
- [Permits & Licenses](#)
- [VHS](#)

Related links

- [Official NR 40 rule](#) [exit DNR]
- [Compiled NR 40 species list](#) [PDF]
- [Printable NR 40 plant list](#) [PDF]
- [Plant list for nurseries](#) [PDF]

Updates by email

- [Invasive species rules](#)
- [Aquatic invasives](#)
- [Forest insects and diseases](#)
- [Terrestrial invasives](#)

Aquatic, Shoreline and Wetland

Terrestrial

NR40 species

AQUATIC, SHORELINE AND WETLAND

Learn what species are invasive by reviewing the [NR40 factsheets](#).

REPORTING INSTRUCTIONS

IF IT IS AN AQUATIC OR WETLAND PLANT OR ANIMAL

- **Photograph** Take a digital photo(s) of the species in the setting where it was found and include a common object in the photo for size reference.
 - For plants include flowers, leaves, stem arrangement, and fruits.
 - For animals include shells, top and bottom and any identifying characteristics.
- **Collect** up to 5 intact specimens to aid identification.
 - For plants, try to get the root system, stems, leaves, flowers, and seeds. Place plants in a Ziplock bag with a damp paper towel.
 - For animals, try to get the entire animal if possible. Place animals in a jar with water or ethanol. Place on ice and store in a refrigerator as soon as possible.
- **Record** details using:
 - Your planned project data in the Surface Water Integrated Monitoring Systems (SWIMS); OR
 - [Aquatic Invasive Species Incident Report \[pdf\]](#); OR
 - Just take notes.
- **Submit** the photos, specimen and form/notes to the [DNR Aquatic Invasive Species Regional Coordinator/Point of Contact](#) and SWIMS.

IF IT IS A FISH

- Contact your [local fish biologist](#).
- If you think you have caught a diseased fish, follow [these steps](#).

Thank you for taking the time to help report invasive species! If you would like to learn more about aquatic invasive species, please visit the following websites.

- [Wisconsin DNR's Aquatic Invasive Species Program](#) (click the monitoring link to learn how to be a monitor!)
- Check where aquatic or wetland invasive species have been reported. Search [waterbody](#) or [by species](#) lists or refer to the [Lakes and AIS Mapping Tool](#).

Prevent the Spread

Control Measures

Rules and Regulations

Wisconsin Invasive Species
Council

AIS Efforts

Publications

For more information, contact:

[DNR invasive species staff](#)

Aquatic, Shoreline and Wetland

Terrestrial

NR40 species

AQUATIC, SHORELINE AND WETLAND

Learn what species are invasive by reviewing the [NR40 factsheets](#).

REPORTING INSTRUCTIONS

IF IT IS AN AQUATIC OR WETLAND PLANT OR ANIMAL

- **Photograph** Take a digital photo(s) of the species in the setting where it was found and include a common object in the photo for size reference.
 - For plants include flowers, leaves, stem arrangement, and fruits.
 - For animals include shells, top and bottom and any identifying characteristics.
- **Collect** up to 5 intact specimens to aid identification.
 - For plants, try to get the root system, stems, leaves, flowers, and seeds. Place plants in a Ziplock bag with a damp paper towel.
 - For animals, try to get the entire animal if possible. Place animals in a jar with water or ethanol. Place on ice and store in a refrigerator as soon as possible.
- **Record** details using:
 - Your planned project data in the Surface Water Integrated Monitoring Systems (SWIMS); OR
 - [Aquatic Invasive Species Incident Report \[pdf\]](#); OR
 - Just take notes.
- **Submit** the photos, specimen and form/notes to the [DNR Aquatic Invasive Species Regional Coordinator/Point of Contact](#) and SWIMS.

IF IT IS A FISH

- Contact your [local fish biologist](#).
- If you think you have caught a diseased fish, follow [these steps](#).

Thank you for taking the time to help report invasive species! If you would like to learn more about aquatic invasive species, please visit the following websites.

- [Wisconsin DNR's Aquatic Invasive Species Program](#) (click the monitoring link to learn how to be a monitor!)
- Check where aquatic or wetland invasive species have been reported. Search [waterbody](#) or [by species](#) lists or refer to the [Lakes and AIS Mapping Tool](#).

Prevent the Spread

Control Measures

Rules and Regulations

Wisconsin Invasive Species Council

AIS Efforts

Publications

For more information, contact:

[DNR invasive species staff](#)



Aquatic Invasive Species Contacts - Aquatic Invasive Species - Regional Coordinator/Point of Contact

Location:



Contact	Organization	Location/Comments	Work Phone	Email
SHELBY ADLER	Wisconsin DNR	Adams, Columbia, Crawford, Dane, Dodge, Grant, Green, Iowa, Jefferson, Juneau, La Crosse, Lafayette, Monroe, Richland, Rock, Sauk, Vernon		
TYLER MESALK	Wisconsin DNR	Barron, Buffalo, Chippewa, Clark, Dunn, Eau Claire, Jackson, Marathon, Pepin, Pierce, Polk, Portage, Rusk, Saint Croix, Taylor, Trempealeau, Wood	715-635-4227	
ALEXANDER SELLE	Wisconsin DNR	Ashland, Bayfield, Burnett, Douglas, Iron, Lincoln, Oneida, Price, Sawyer, Vilas, Washburn		
PATRICK SIWULA	Wisconsin DNR	Calumet, Fond du Lac, Green Lake, Kenosha, Manitowoc, Marquette, Milwaukee, Ozaukee, Racine, Sheboygan, Walworth, Washington, Waukesha, Waushara, Winnebago	920-893-8552	
AMANDA SMITH	Wisconsin DNR	Brown, Door, Florence, Forest, Kewaunee, Langlade, Marinette, Menominee, Oconto, Outagamie, Shawano, Waupaca		

Aquatic, Shoreline and Wetland

Terrestrial

NR40 species

AQUATIC, SHORELINE AND WETLAND

Learn what species are invasive by reviewing the [NR40 factsheets](#).

REPORTING INSTRUCTIONS

IF IT IS AN AQUATIC OR WETLAND PLANT OR ANIMAL

- **Photograph** Take a digital photo(s) of the species in the setting where it was found and include a common object in the photo for size reference.
 - For plants include flowers, leaves, stem arrangement, and fruits.
 - For animals include shells, top and bottom and any identifying characteristics.
- **Collect** up to 5 intact specimens to aid identification.
 - For plants, try to get the root system, stems, leaves, flowers, and seeds. Place plants in a Ziplock bag with a damp paper towel.
 - For animals, try to get the entire animal if possible. Place animals in a jar with water or ethanol. Place on ice and store in a refrigerator as soon as possible.
- **Record** details using:
 - Your planned project data in the Surface Water Integrated Monitoring Systems (SWIMS); OR
 - [Aquatic Invasive Species Incident Report \[pdf\]](#); OR
 - Just take notes.
- **Submit** the photos, specimen and form/notes to the [DNR Aquatic Invasive Species Regional Coordinator/Point of Contact](#) and SWIMS.

IF IT IS A FISH

- Contact your [local fish biologist](#).
- If you think you have caught a diseased fish, follow [these steps](#).

Thank you for taking the time to help report invasive species! If you would like to learn more about aquatic invasive species, please visit the following websites.

- [Wisconsin DNR's Aquatic Invasive Species Program](#) (click the monitoring link to learn how to be a monitor!)
- Check where aquatic or wetland invasive species have been reported. Search [waterbody](#) or [by species](#) lists or refer to the [Lakes and AIS Mapping Tool](#).

Prevent the Spread

Control Measures

Rules and Regulations

Wisconsin Invasive Species Council

AIS Efforts

Publications

For more information, contact:

[DNR invasive species staff](#)

Check to see if species has been reported

Wisconsin Department of Natural Resources

Aquatic Invasive Species

Location:

Aquatic invasive species (AIS) records are assigned statuses of "verified", "observed", or "no longer observed" based on AIS Status Guidance. In general, "verified" populations are established and have been verified by a taxonomic expert. Populations with the "observed" status have not been verified by a taxonomic expert or do not have established populations. Populations with the "no longer observed" status include populations where a reproducing population did not establish. Our inventories are not necessarily exhaustive so it is important to report occurrences. To report new discoveries visit: <http://dnr.wi.gov/topic/Invasives/report.html>. See the Aquatic Invasive Species Guidance for information on how statuses are assigned. Personally identifiable information on data collection forms may be provided to requesters to the extent required by Wisconsin's Open Records Law [s. 19.31-19.39, Wis. Stats.].

[To Excel](#)

< First < Prev Page 1 of 108 Next > Last >

Waterbody Name	Waterbody ID Code (WBIC)	Invasive Species
Adams County (29)		
Amey Pond	176000	Banded Mystery Snail, Curly-Leaf Pondweed, Eurasian Water-Milfoil
Arkdale Lake	1374300	Chinese Mystery Snail, Curly-Leaf Pondweed, Eurasian Water-Milfoil, Purple Loosestrife, Rusty Crayfish, Water Hyacinth, Zebra Mussel
Big Roche A Cri Creek	1374100	Japanese knotweed (<i>Fallopia japonica</i>), Rusty Crayfish, Water Hyacinth, Zebra Mussel
Big Roche a Cri	1374800	Chinese Mystery Snail, Curly-Leaf Pondweed, Eurasian Water-Milfoil, Japanese knotweed (<i>Fallopia japonica</i>), Rusty Crayfish, Zebra Mussel
Camelot Lake	1378100	Banded Mystery Snail, Chinese Mystery Snail, Curly-Leaf Pondweed, Eurasian Water-Milfoil, Hybrid Eurasian / Northern Water-Milfoil, Purple Loosestrife, Zebra Mussel
Castle Rock Lake	1345700	Cylindro, Eurasian Water-Milfoil, Zebra Mussel
Crooked Lake	102600	Banded Mystery Snail, Curly-Leaf Pondweed, Eurasian Water-Milfoil, Hybrid Eurasian / Northern Water-Milfoil

Wisconsin Department of Natural Resources

Aquatic Invasive Species Locations

- [All - New 2016](#)
- [All - New 2017](#)
- [All - New 2018](#)
- [All - New 2019](#)
- [All - New 2020](#)

- [Asiatic Clam \(*Corbicula*\)](#)
- [Banded Mystery Snail](#)
- [Brittle Watermymph](#)
- [Chinese Mystery Snail](#)
- [Curly-Leaf Pondweed](#)
- [Eurasian Water-Milfoil](#)
- [Faucet Snail](#)
- [Fishhook Waterflea](#)
- [Flowering Rush](#)
- [Giant hogweed \(*Heracleum mantegazzianum*\)](#)
- [Graceful Cattail](#)
- [Hybrid Eurasian / Northern Water-Milfoil](#)
- [Japanese Hops](#)
- [Japanese Mystery Snail](#)
- [Japanese knotweed \(*Fallopia japonica*\)](#)
- [Java Waterdrop / Vietnamese Water Celery](#)
- [New Zealand Mudsnaill](#)
- [Ornamental water lilies \(non-native *Nymphaea* sp.\)](#)
- [Phragmites \(non-native\)](#)
- [Purple Loosestrife](#)

Wisconsin Department of Natural Resources

Lakes & AIS Mapping Tool

Search... Sign out

Basic Tools Identify Tools Drawing & Measuring Find Location Maps & Data Boater Movement Help Tool Labels

Show Layers Show Legend Pan Zoom In Zoom Out Full State Previous Extent Bookmarks Get Info Print Map Feedback

Table of Contents Navigation Other Tools & Actions

Layers

Filter Layers... Filter

- Invasive Invertebrates
- Invasive Wetland Plants
- Flowering Rush
- Graceful Cattail (*Typha laxmannii*)
 - Verified (Graceful Cattail)
 - Verified GC Points
 - Verified GC Lines
 - Verified GC Areas
 - Observed (Graceful Cattail)
 - No Longer Observed (Graceful Cattail)

Basemaps WKID: 4326 Lat/Long Lat: 43.17598° N Lon: 86.62955° W USGS, and other data | See Credits associat..

REPORT INVASIVE SPECIES

We are working to keep invasive species out of Wisconsin. Early reports of new populations allow us to respond rapidly and control invasives before they spread into new areas. Select from the tabs below to report invasive species you have found.

Aquatic, Shoreline and Wetland | **Terrestrial** | Non-40 species

TERRESTRIAL

REPORTING INSTRUCTIONS

▲ **Terrestrial plants**

Check photos and descriptions on the [website](#) to help narrow the possibilities for plant identity. Be sure to include notes about site location and description, population size and control actions taken, if any.

- **Complete the [Invasive Plant Report Form \[PDF\]](#)** to report occurrences of invasive plants growing in Wisconsin or near state borders. Please use one form for each sample.
 - If you prefer to use GPS (global positioning system) but do not have a GPS device, you can visit [itouchmap.com \[exit DNR\]](#) to find the precise location on a digital topographic map.
 - If using a GPS device, please note the datum being used (e.g. WGS 84, UTM, WI Transverse Mercator, etc).
 - **Enclose form with your identification evidence:** photographs, pressed plant specimens, or fresh specimens. See below for guidelines on each method.
- **If you can't fill out the form,** please send photos, location and other information about the plant to Invasive.Species@wisconsin.gov
- **Send it to the Wisconsin DNR.** Use the address on the form or submit by email.

Invasive Species
Learn More
Report an Invasive
Prevent the Spread
Control Measures
Rules and Regulations
Wisconsin Invasive Species Council
AIS Efforts
Publications

For more information, contact:

[DNR invasive species staff](#)

Aquatic Invasive Species Network



NEW INVADERS

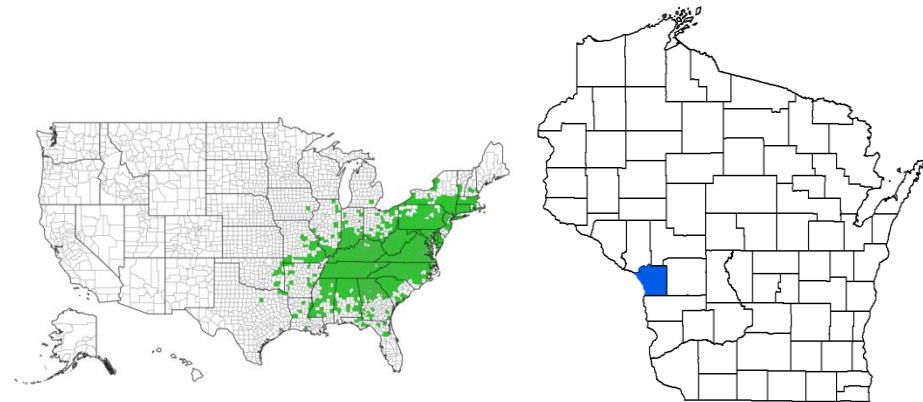
- Japanese stiltgrass (*Microstegium vimineum*)
- Golden creeper/red hailstone (*Thladiantha dubia*)
- Butterfly dock (*Petasites hybridus*)
- Graceful cattail (*Typha laxmannii*)
- European frogbit (*Hydrocharis morus-ranae*)



Japanese stiltgrass (*Microstegium vimineum*)

NR40 PROHIBITED

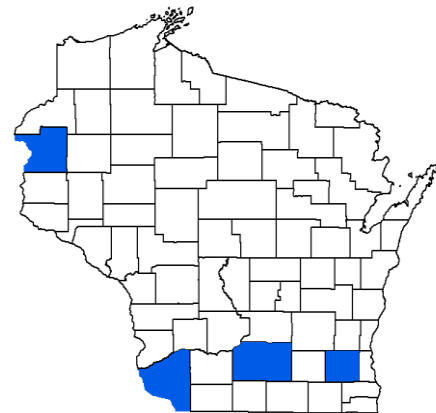
- 1.1 m tall
- Leaves 2.5-7.5 cm long
- Silvery mid-rib
- Weak stems, stilt-like rootlets
- Cleistogamous flowers
- *Alabama Extension has great ID resources*



Golden Creeper/Red Hailstone (*Thladiantha dubia*)

UNDER NR40 ASSESSMENT

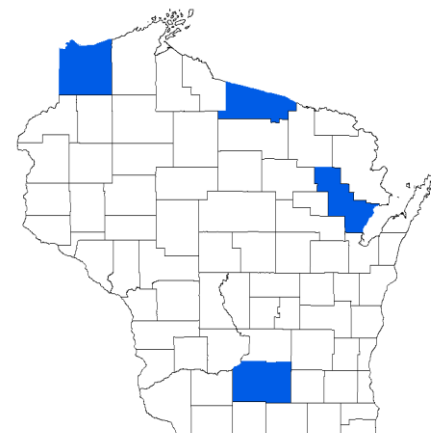
- Vines with hairy tendrils, die back in fall
- Heart-shaped leaves 5-15 cm long ~3.75-10 cm wide
- Yellow bell-shaped flowers ~2.5 cm with 5 recurved lobes
- Green to red rind



Butterfly dock (*Petasites hybridus*)

NR 40 PROHIBITED

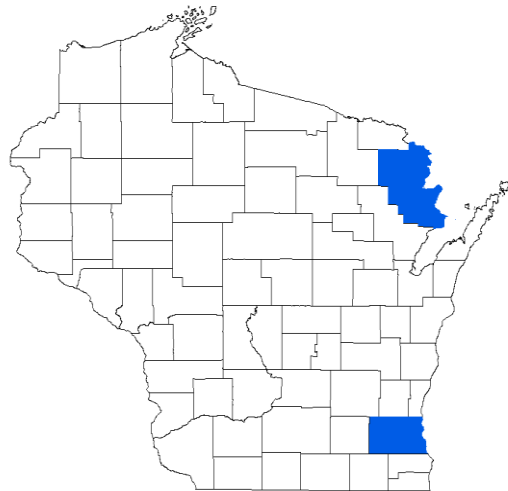
- Pink radial flowers on 5-20 cm stems in spring before leaves
- Large, heart-shaped leaves, finely and unevenly toothed <1m wide on 80-120 cm (<2m) fleshy stems
- Pappus seeds
- Blackish rhizomes



Graceful Cattail (*Typha laxmannii*)

NR40 PROHIBITED

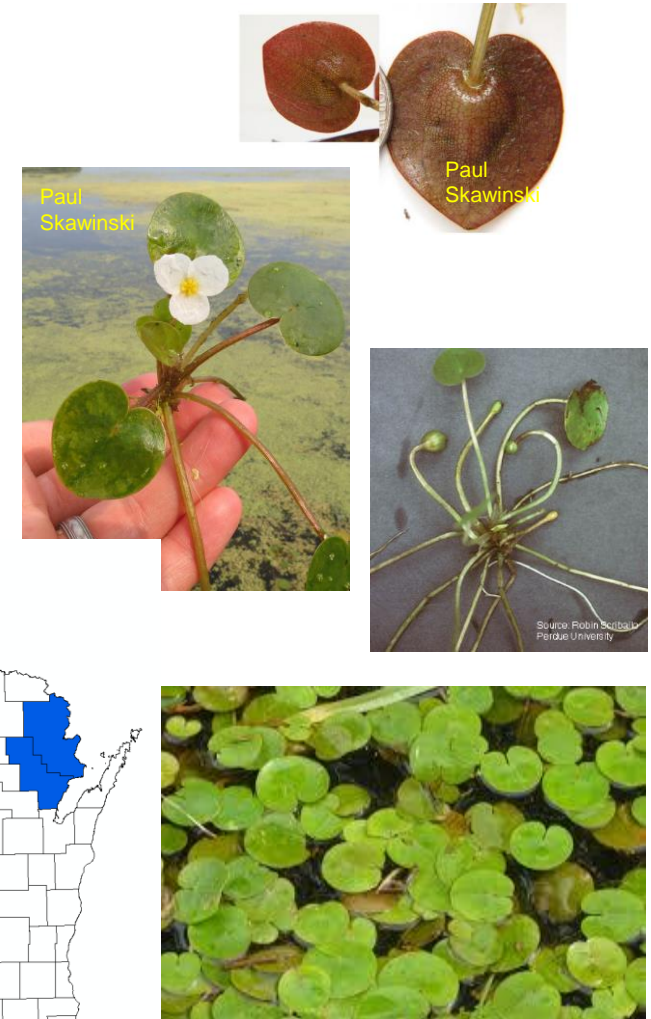
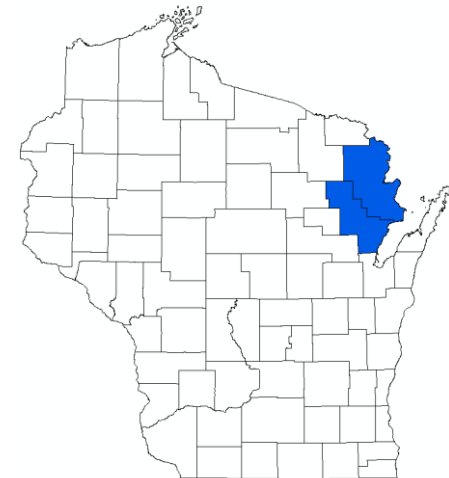
- Leaves up to 1.5 m tall and ≤ 4 mm wide
- Narrow male flower spike, 5 cm gap to short, broad female flower spike



European Frogbit (*Hydrocharis morsus-ranae*)

NR40 PROHIBITED

- 1.2-5.7 cm heart-shaped leaves on long stems, purple beneath <5.7 cm
- 1.5 cm flower with 3 white petals with yellow center
- Air pockets on midvein
- Stolons and turions
- Population in eastern MI UP



Keep reporting these!



Japanese hops
(*Humulus japonicus*)



Lesser celandine
(*Ranunculus ficaria*)



Colt's foot
(*Tussilago farfara*)



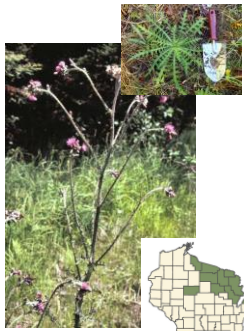
Policeman's helmet
(*Impatiens glandulifera*)



Tall manna grass
(*Glyceria maxima*)



Southern cattail
(*Typha domingensis*)



European marsh thistle
(*Cirsium palustre*)



Hairy willowherb
(*Epilobium hirsutum*)



Java waterdropwort
(*Oenanthe javanica*)



Water hyacinth
(*Pontedaria crassipes*)



Water lettuce
(*Pistia stratiotes*)



Yellow floating heart
(*Nymphoides peltata*)



NR 107 Administrative Rule Revisions Aquatic Plant Management Wetlands

- Up to a 30-month process
- 6 phases – with approximately 11 major steps
- We are in Phase 4 – Public Hearings
- Changes to wetland permitting

What's Next?

- Draft rule is open for public comment
 - Now to March 1st.
- Public Hearing:
 - February 22nd, at 1 PM.
 - You may provide written comments or register to speak at the hearing.
- Then, DNR will consider all of your comments during final edits

How Can You Get Involved?

- Go to Program's Webpage for Helpful Background Information:
 - Google Search: WDNR apm rules
 - Program Webpage:
<https://dnr.wisconsin.gov/topic/lakes/plants/rules>
- Attend public hearing on February 22nd.
- Provide written comments to Madi Johansen between now and March 1 on wetland components.

How will we use your comments?

- We will consider all of the comments received between now and March 1st.
- We will weigh the pros and cons of different options based on public input and DNR constraints
- We will make final edits to the draft rule, showing what changes were made based on public input.
- We will send that version to the Natural Resources Board, Governor and Legislature for approval.

Questions?

[Report invasive species](#) | [Wisconsin DNR](#)

[Aquatic Invasive Species Contacts - Aquatic Invasive Species - Regional Coordinator/Point of Contact \(wi.gov\)](#)

[Jason Granberg](#)

Invasive Plants

[Maureen Kalscheur](#)

Aquatic Invasive Species Monitoring

[Jared Urban](#)

State Natural Areas

[Madison Johansen](#)

Aquatic Plant Management

[Matt Puz](#)

Wetland Invasive Plant Control