

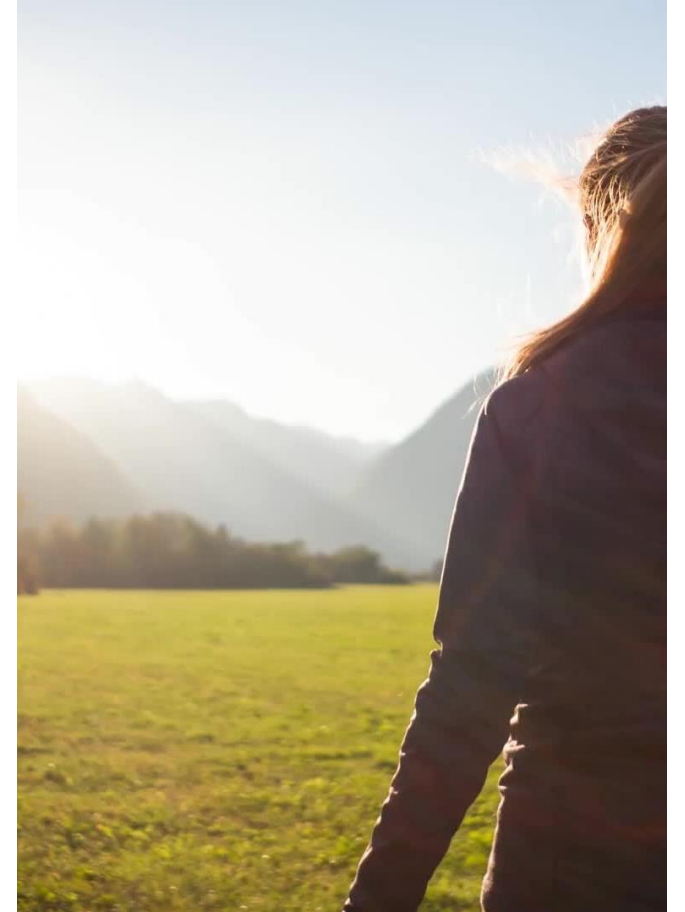


Leading Through Adversity

Chip Fulghum, Endeavors CEO

Assessing the Landscape

- Is there Unity of Purpose
- Going from Understanding to Agreement to Alignment
- Alignment = Shared Purpose
 - Sounds like something else...







Why Culture?

- Why does it Matter
- What makes it up?
- P+L+V

Leadership

- Essentials of Leadership

- $T + R + T = EL$

- $T = R + C + A + V + A + T + A$

- Servant Leader

- Hugging

- Whoopin'

- Not about You

Trust = R + C + A + V + A + T + A

Necessities of Trust

Accountability

Availability

Truth

Reliability

Credibility

Approachability

Vulnerability



Relationships Mean Caring for People

- How
- Know them
 - Bragging on them
- Relationships Matter
- ❤️ in the Workplace



Values

It's Easy Right?



The Day one Word Changed Everything



Because when the Storm comes...

- Fear
- Chaos
- Garbled Communication
- Out of Alignment
- Loss

How We Respond Provides:

- Opportunity
- Clarity
- Care
- Leadership
- **Know Your Why**

**Adversity Makes Us More Resilient & Stronger
...AND Remember it will END**



What's on your **mind**?



Thank You!

Chip Fulghum

Chief Executive Officer, Endeavors



210-431-6466



cfulghum@endeavors.org



endeavors.org

ENDEAVORS[®]



Chip's Leadership Reading Recs

