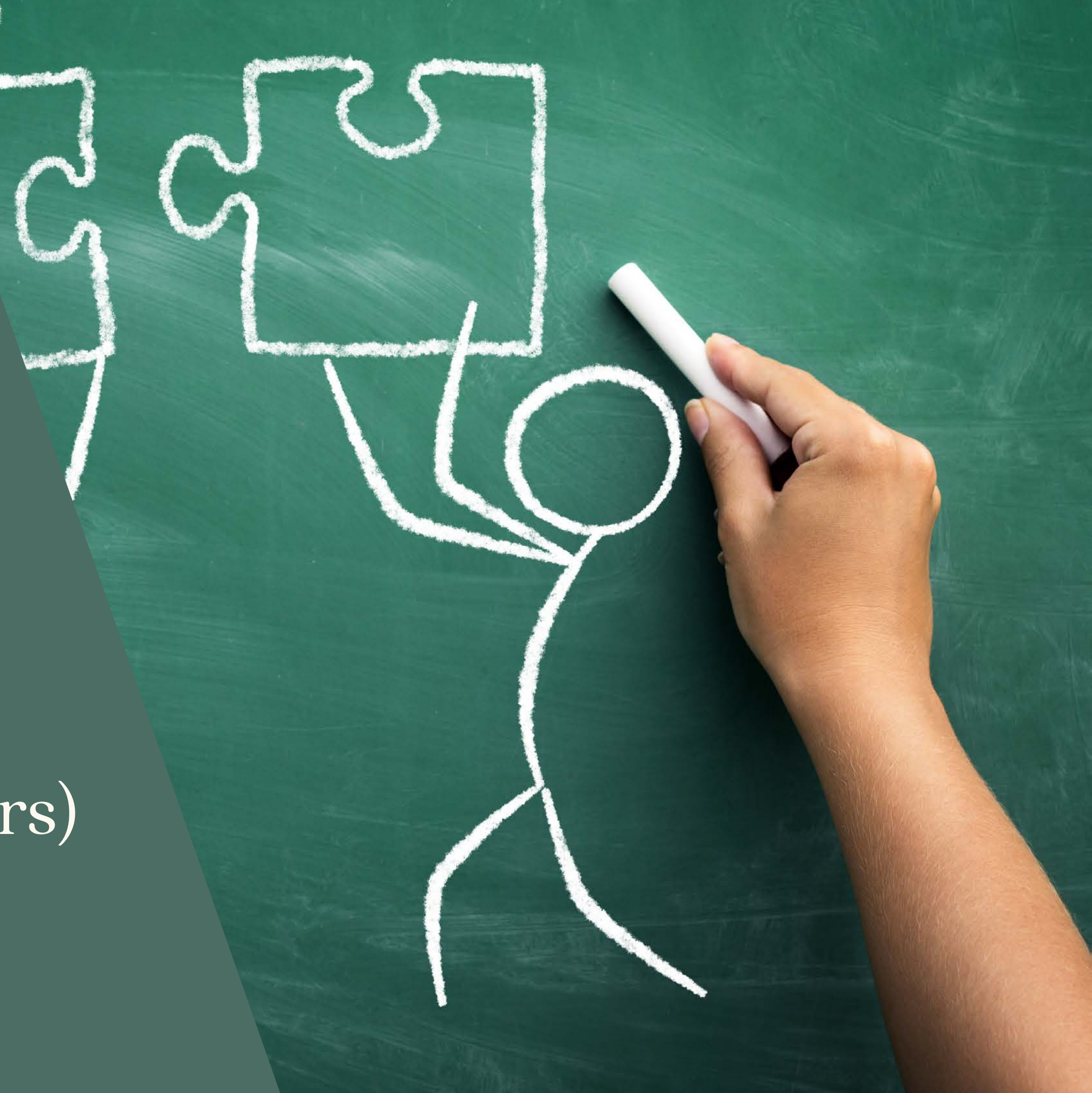


# Become Part of the Solution

(Leading Instructional  
Improvement Beside Teachers)







DR. RENE  
SPRY

PRINCIPAL



JULIE  
KALE

ACADEMIC  
FACILITATOR



CONNIE  
ABERNATHY

4TH GRADE  
TEACHER





# OXFORD ELEMENTARY

*Engage. Inspire. Empower.*

- Located in Claremont, NC
- 1 of 13 Catawba County Elementary Schools
- 547 Students
- 72% Low income students
- 232 Minority students
- K-6
- 32 Teachers
- 4 teachers with 0-3 years experience
- 4 teachers in 2022 that were red (ineffective)

# Oxford 2021-2023 Testing Data


2023 data does NOT include 2nd administration

21 and 22 data DOES include 2nd administration

## ELA Grade Level Data

	2021	2022	2023	23 Dist. Avg.
3rd	34.2	25.8	26.1	41.9
4th	37.6	52.8	45.1	49.8
5th	25.7	39.8	44.4	42.9
6th	45.1	39.1	50.0	52.0
Overall	36.1	38.3	42.1	

Setting goals is the 1st step in turning the possible into the impossible.

A wooden desk with a pencil holder, a mug, and a sign with a quote. The sign is white with black and red text. The quote is "A GOAL WITHOUT A PLAN IS JUST A WISH." by Antoine de Saint-Exupery. The words "GOAL" and "WISH" are in red. The background is a wooden wall.

**A GOAL WITHOUT A  
PLAN IS JUST A WISH.**

- Antoine de Saint-Exupery

# PRE-COVID



## HOW DID WE START?

- Establish PLCs
- 1 PLC a week with team (grade level teachers, principal, and AF)
- 1 Grade Level Planning a week with team (grade level teachers and AF)



# RESTART

- Plan with deconstructed standards  
4th grade and 1st Grade  
examples
- Give common pre and post assessments
- Pre and post assessment data on data wall
- Aligning tasks, lessons, activities, etc. to the deconstructed standards







# PIVOT

# PIVOT

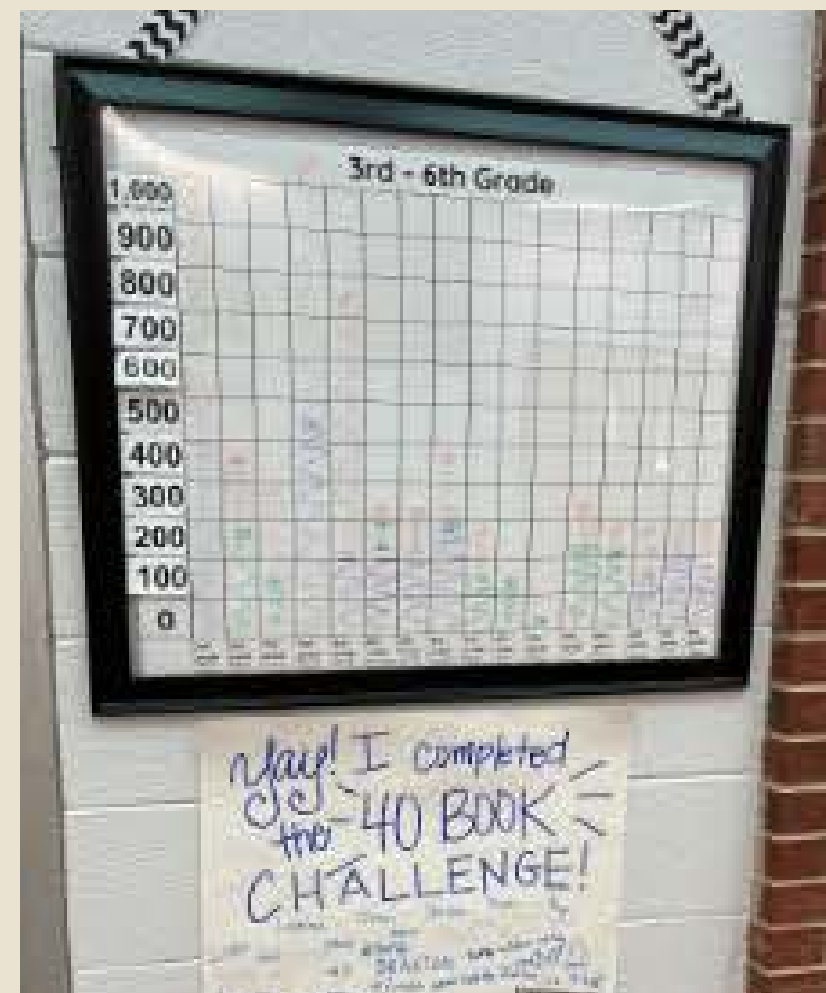
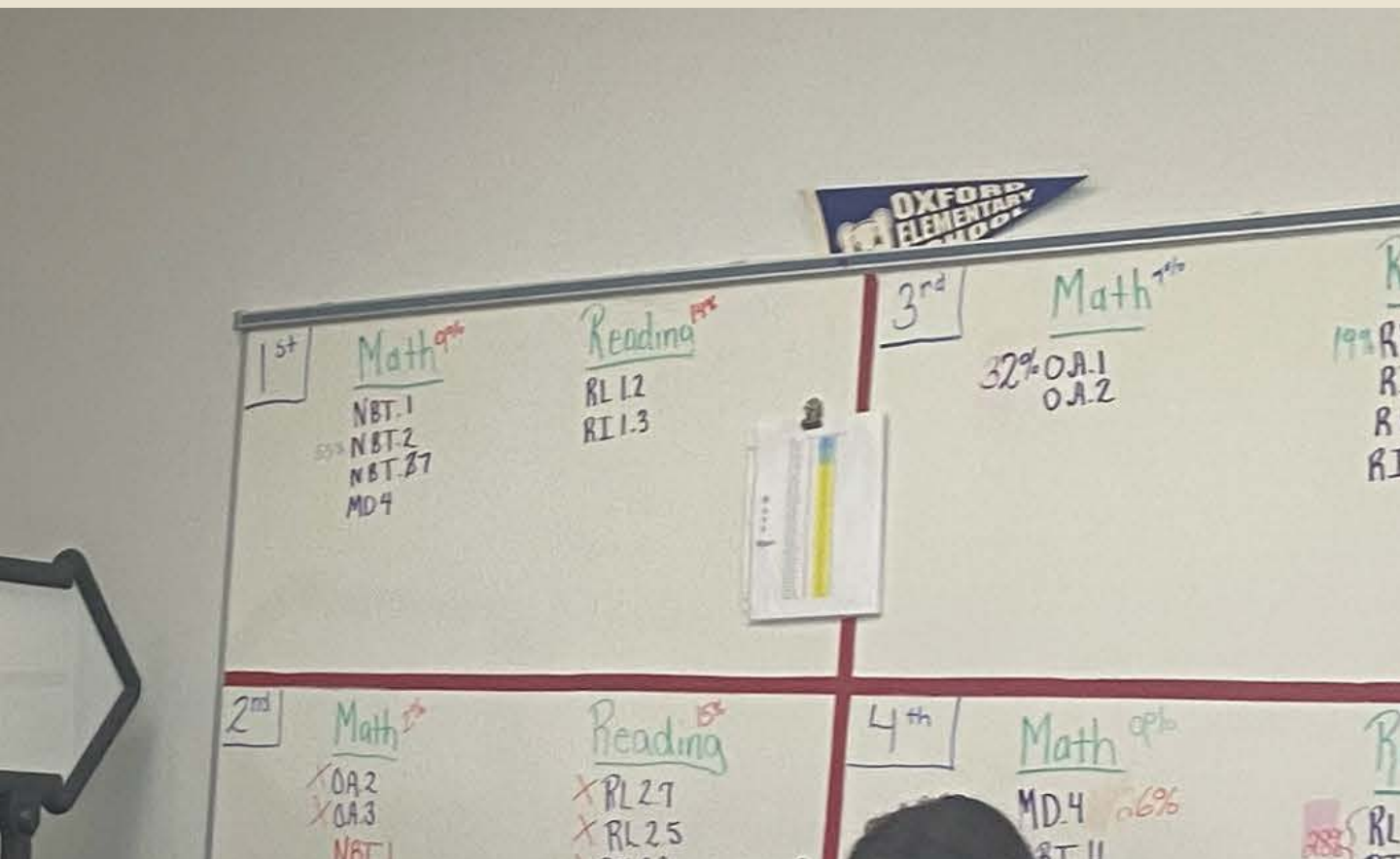
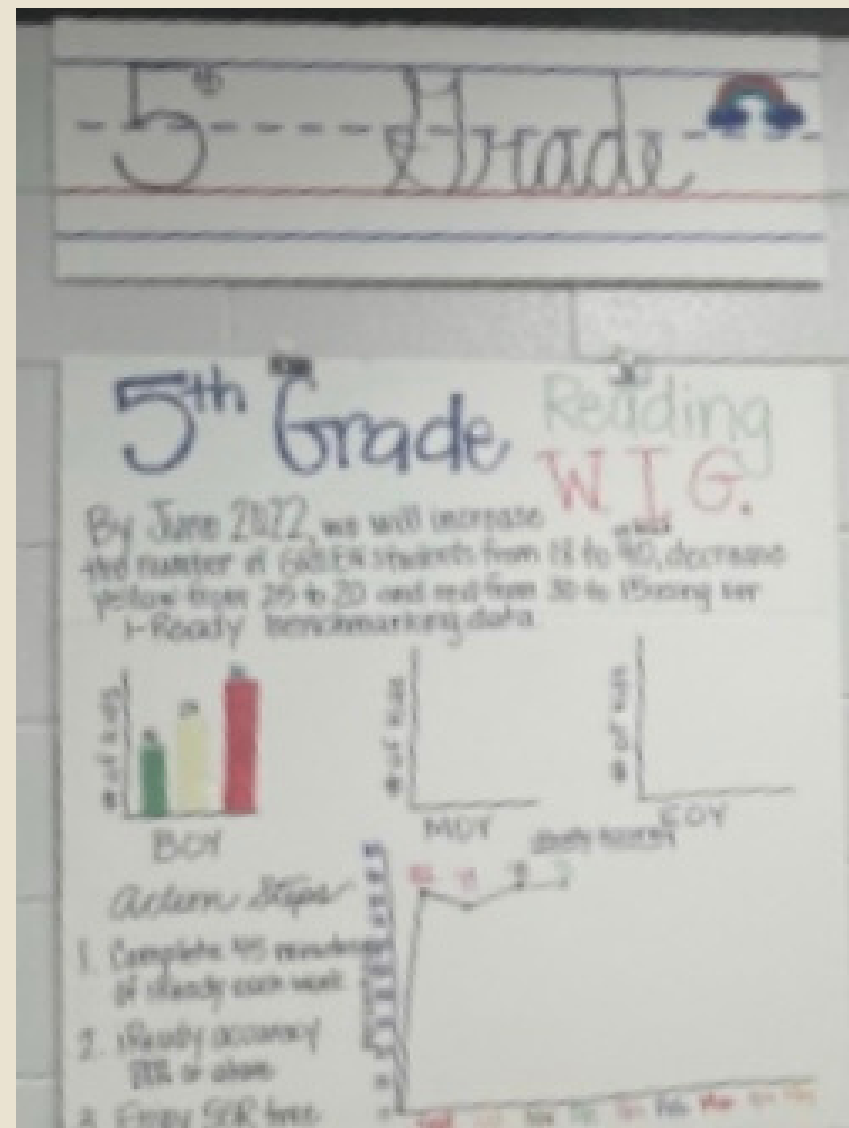
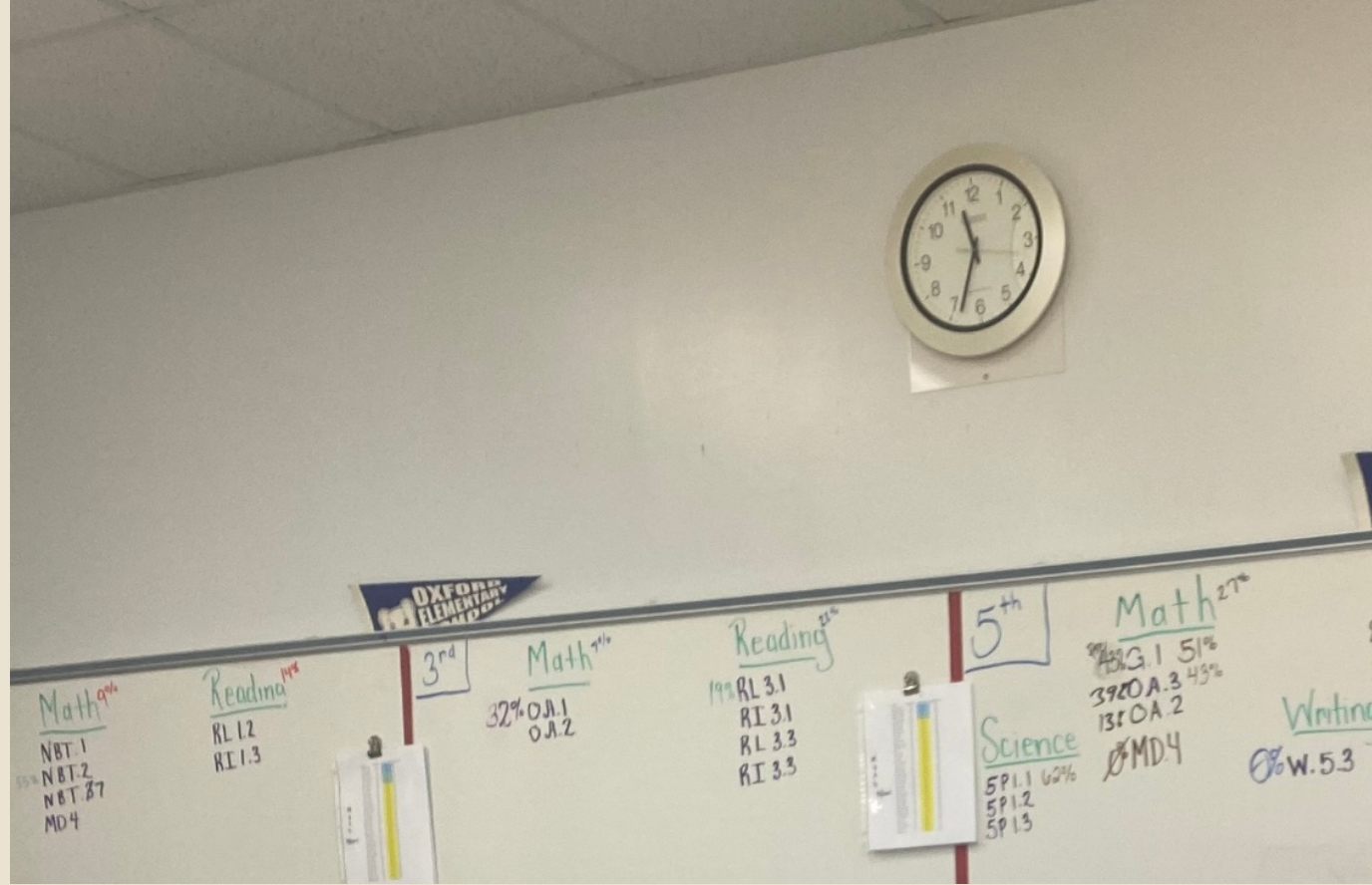
# PIVOT

**Pivoting is a term that describes the process of changing direction when the current strategy is not delivering the desired results.**





- **Pivot thinking about planning time**
- **Monitoring by Principal and Assistant Principal**
- **Accountability to the Team**
- **Re-thinking assessment data and data walls**



DATA TRACKING



# STUDENT GROWTH

## Reading



Year	Grade	Performance	Visual Indicator
2019	3	Meets Expected Growth	
	4	Meets Expected Growth	
	5	Meets Expected Growth	
	6	Meets Expected Growth	
	Across Grades	Meets Expected Growth	
2021	3	Meets Expected Growth	
	4	Meets Expected Growth	
	5	Does Not Meet Expected Growth	
	6	Exceeds Expected Growth	
	Across Grades	Meets Expected Growth	
2022	3	Does Not Meet Expected Growth	
	4	Meets Expected Growth	
	5	Meets Expected Growth	
	6	Meets Expected Growth	
	Across Grades	Does Not Meet Expected Growth	
2023	3	Meets Expected Growth	
	4	Meets Expected Growth	
	5	Meets Expected Growth	
	6	Meets Expected Growth	
	Across Grades	Meets Expected Growth	





# STUDENT GROWTH

## Math

Subject	← Year	← Grade	Growth Indicator	
EOG Math - Gain	2019	4	✓ Meets Expected Growth	
		5	✗ Does Not Meet Expected Growth	
		6	⤴ Exceeds Expected Growth	
		Across Grades	✓ Meets Expected Growth	
2021	2021	5	⤴ Exceeds Expected Growth	
		6	⤴ Exceeds Expected Growth	
		Across Grades	⤴ Exceeds Expected Growth	
2022	2022	4	✓ Meets Expected Growth	
		5	✗ Does Not Meet Expected Growth	
		6	✓ Meets Expected Growth	
		Across Grades	✓ Meets Expected Growth	
2023	2023	4	⤴ Exceeds Expected Growth	
		5	⤴ Exceeds Expected Growth	
		6	⤴ Meets Expected Growth	
		Across Grades	⤴ Exceeds Expected Growth	



# PLC/GLP

## STANDARDS

### PROCESS

#### Reading Standard(s): \_\_\_\_\_

- Review the deconstructed standard.
- Create a pre and post assessment that align to the deconstructed standard.
- Analyze preassessment data to guide your instruction.
- Align tasks, lessons, activities, etc, to the deconstructed standard.
- Analyze post assessment data.
- Create a plan for the students who did not show mastery of the standard.

# What are we doing now?

## Continuing work from previous years

## Alignment of pre and post assessments

## Analyzing pre assessment data to guide your instruction

## Creating a plan for students who do not show proficiency in post assessment

# Questions?

[Rene\\_Spry@catawbaschools.net](mailto:Rene_Spry@catawbaschools.net)

[Julie\\_Kale@catawbaschools.net](mailto:Julie_Kale@catawbaschools.net)

[Connie\\_Abernathy@catawbaschools.net](mailto:Connie_Abernathy@catawbaschools.net)

