

Multifamily Energy Efficiency Program

Heat Pump Incentives

Increase your building's efficiency, reduce energy costs, and lower emissions.

What is a heat pump?

Heat pumps are an environmentally friendly, extremely efficient, and affordable way to keep your building comfortable year-round.

How do heat pumps work?

Heat pumps pull heat from the air or underground to heat your building in the colder months. They flow in reverse and use a refrigerant to cool your building in the warmer months.

Benefits:

- **Reduces heating costs:** Heat pumps typically cost less than oil heat and are more environmentally conscious.
- **Dual heating and cooling:** High-performance heat pumps help you save on cooling costs and are substantially more efficient than window A/C units.
- **Financial incentives:** Con Edison offers financial incentives to make purchasing and installing heat pump technology even more affordable.

Interested in learning more?

Visit conEd.com/HeatPumps

Which heat pump is right for you?

Ductless Mini-Split

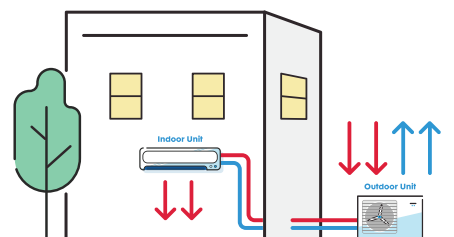
Keeps your building comfortable year-round without blocking windows.

Best Suited for the Following Building Types:

- Garden Style: 1-3 stories
- Pre-War: 4-7 stories
- Post-War: 4-7 stories

Benefits:

- Personalized comfort control by zone
- Dual heating-and-cooling system
- Reduced maintenance costs
- Whisper quiet
- Lower emissions
- Air filtering and dehumidification
- Easy to operate



Central Air-Source

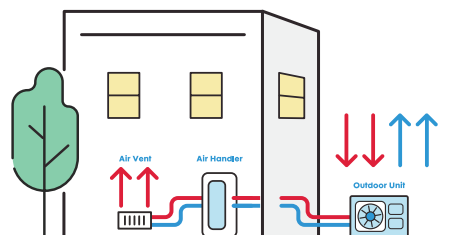
Clean and efficient cooling and heating through ducts.

Best Suited for the Following Building Types:

- Garden Style: 1-3 stories
- Pre-War: 4-7 stories
- Post-War: 4-7 stories
- Post-War: 8+ stories
- Post-1980s: 8+ stories

Benefits:

- Uses existing ductwork
- Dual heating-and-cooling system
- Reduced maintenance costs
- Whisper quiet
- Lower emissions
- Air filtering and dehumidification



Multifamily Energy Efficiency Program

Heat Pump Incentives

Increase your building's efficiency, reduce energy costs and emissions.

Variable Refrigerant Flow

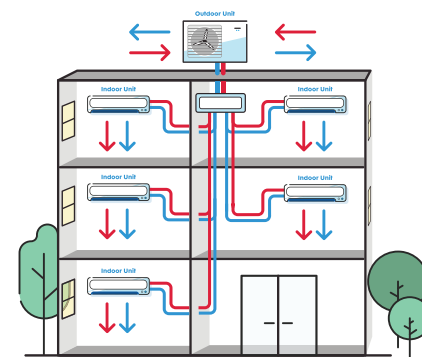
Circulates refrigerant to one or multiple indoor units, allowing for heating and cooling in different zones and personalized comfort.

Best Suited for the Following Building Types:

- Pre-War: 4-7 stories
- Post-War: 4-7 stories
- Post-War: 8+ stories
- Post-1980s: 8+ stories

Benefits:

- Dual heating-and-cooling system
- Reduced maintenance costs
- Whisper quiet
- Lower emissions
- Air filtration and dehumidification
- Easy to operate



Geothermal

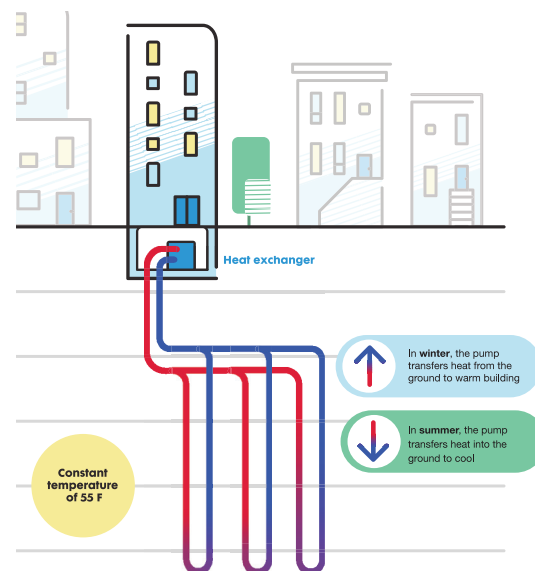
Uses heat stored in the earth to provide heating, air conditioning, and hot water.

Best Suited for the Following Building Types:

- Garden Style: 1-3 stories
- Suburban residential
- Commercial space with room for drilling wells

Benefits:

- Dual heating-and-cooling system
- Systems equipped with desuperheaters can also provide hot water by transferring excess heat from the pump's compressor to the building's hot water tank
- Reduced maintenance costs
- Whisper quiet
- Lower emissions
- Air filtration and dehumidification
- Easy to operate
- No visible or exposed outdoor equipment



Incentives Available

Service	Category #	System Description	New Construction (Geothermal Heat Pump Only)	Existing Buildings (Air-Source & Geothermal Heat Pumps)
Space Heating	2c*	Multifamily Full Load Air-Source Heat Pump Heating With Decommissioning	N/A	\$5,000/Dwelling Unit
	4	Custom Full Load Space Heating Applications	\$125/MMBtu	\$200/MMBtu
	4a	Tier 1 - Custom Full Load Space Heating Application + Envelope Tier 2 - Custom Full Load Space Heating Application + Envelope	Tier 1 - \$125/MMBtu Tier 2 - \$150/MMBtu	Tier 1 - \$200/MMBtu Tier 2 - \$225/MMBtu
Water Heating	6	Custom Domestic Hot Water	\$125/MMBtu**	\$200/MMBtu
Space Heating	10	Custom Partial Load Space Heating Applications	N/A	\$70/MMBtu

*Category 2c incentives are available for buildings with up to 50 units.

**Custom domestic hot water is a new construction only eligible for Clean Heat incentives when completed in conjunction with ground-source heat pumps for space heating.

Note: Multifamily incentives are available for projects in buildings with at least five units and require decommissioning over the scope of the project. Incentives will be capped at \$1 million per project or 50% of project costs, whichever is lower.

View the [installation guidelines](#).

For more information, visit conEd.com/CleanHeatMultifamily, call 1-844-316-4288, or email CleanHeatMultifamily@conEd.com.